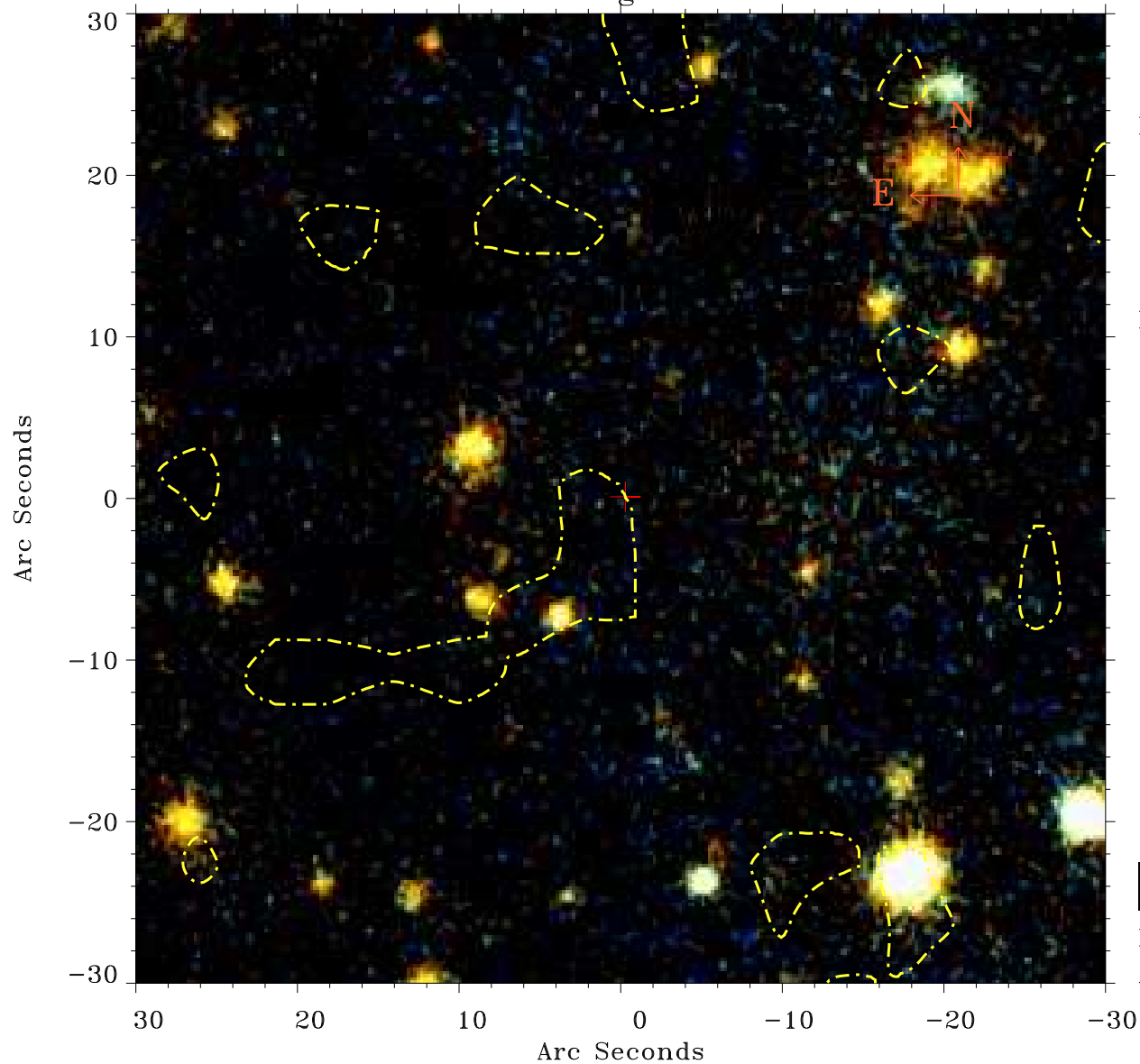


# EPIC source finding chart ACDS V10.0



Principal Investigator :

Dr Matteo Guainazzi

XMM target name :

UGC2608

OBS ID : 2942401

Source number : 12

X-ray coordinates :

$\alpha$  : 03 15 28.54

$\delta$  : +42 05 30.9

Center coordinates :

$\alpha$  : 03 15 28.55

$\delta$  : +42 05 31.0

Plate reference :

Origin : PanSTARRS-DR1

Color coding :

z band ●

(z+g)/2 ●

g band ●

Contour levels (counts) :



XMM SSC

Apr 27 16:25:58 2019