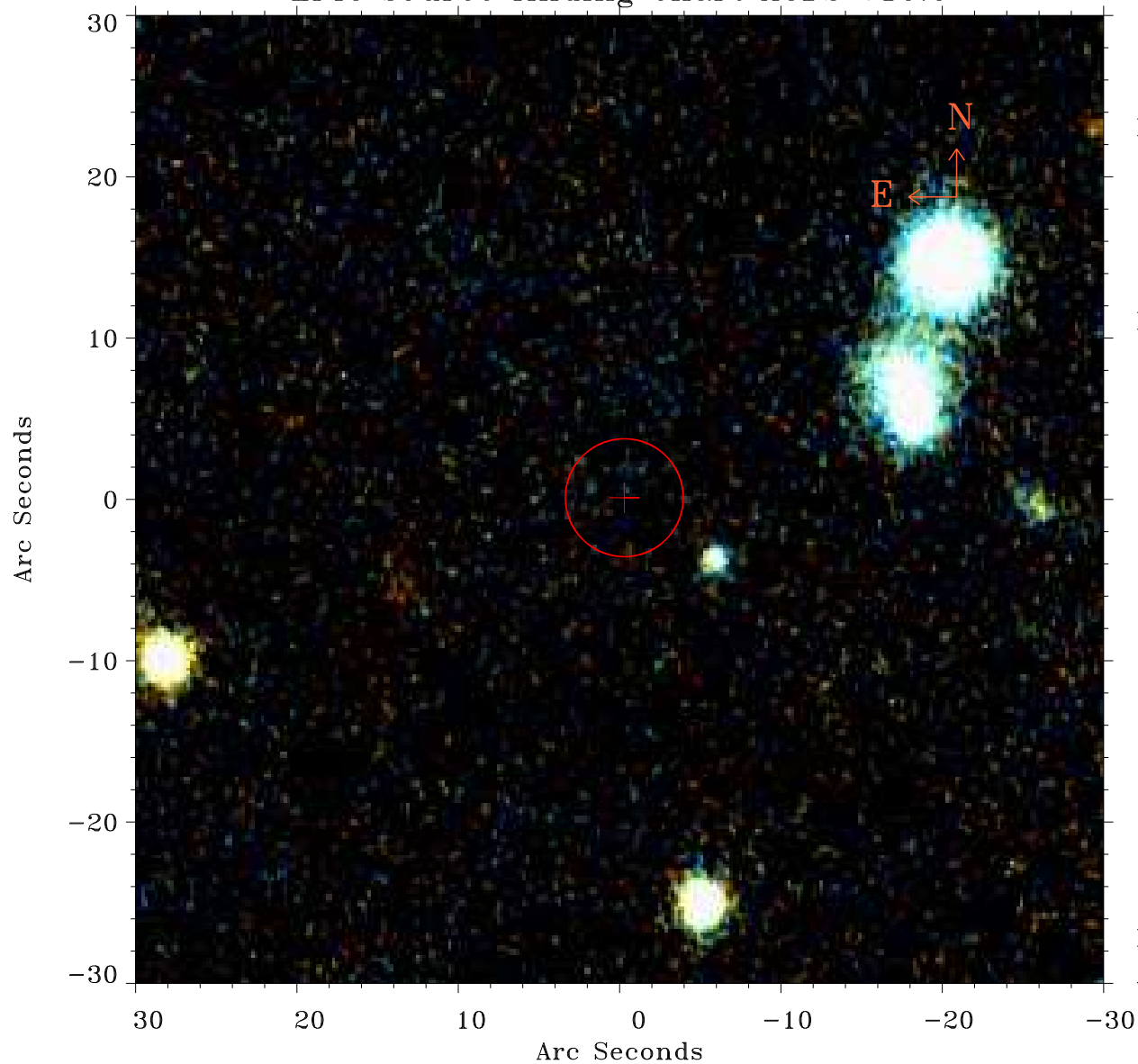


# EPIC source finding chart ACDS V10.0



Principal Investigator :

Dr Martin Hardcastle

XMM target name :

3C449

OBS ID : 2970401

Source number : 3

X-ray coordinates :

$\alpha$  : 15 21 38.67

$\delta$  : +76 45 57.4

Center coordinates :

$\alpha$  : 15 21 38.70

$\delta$  : +76 45 57.5

Plate reference :

Origin : PanSTARRS-DR1

Color coding :

z band ●

(z+g)/2 ●

g band ●

Error:

R90 : 3.6 arcsec

XMM SSC

Apr 24 09:12:24 2019