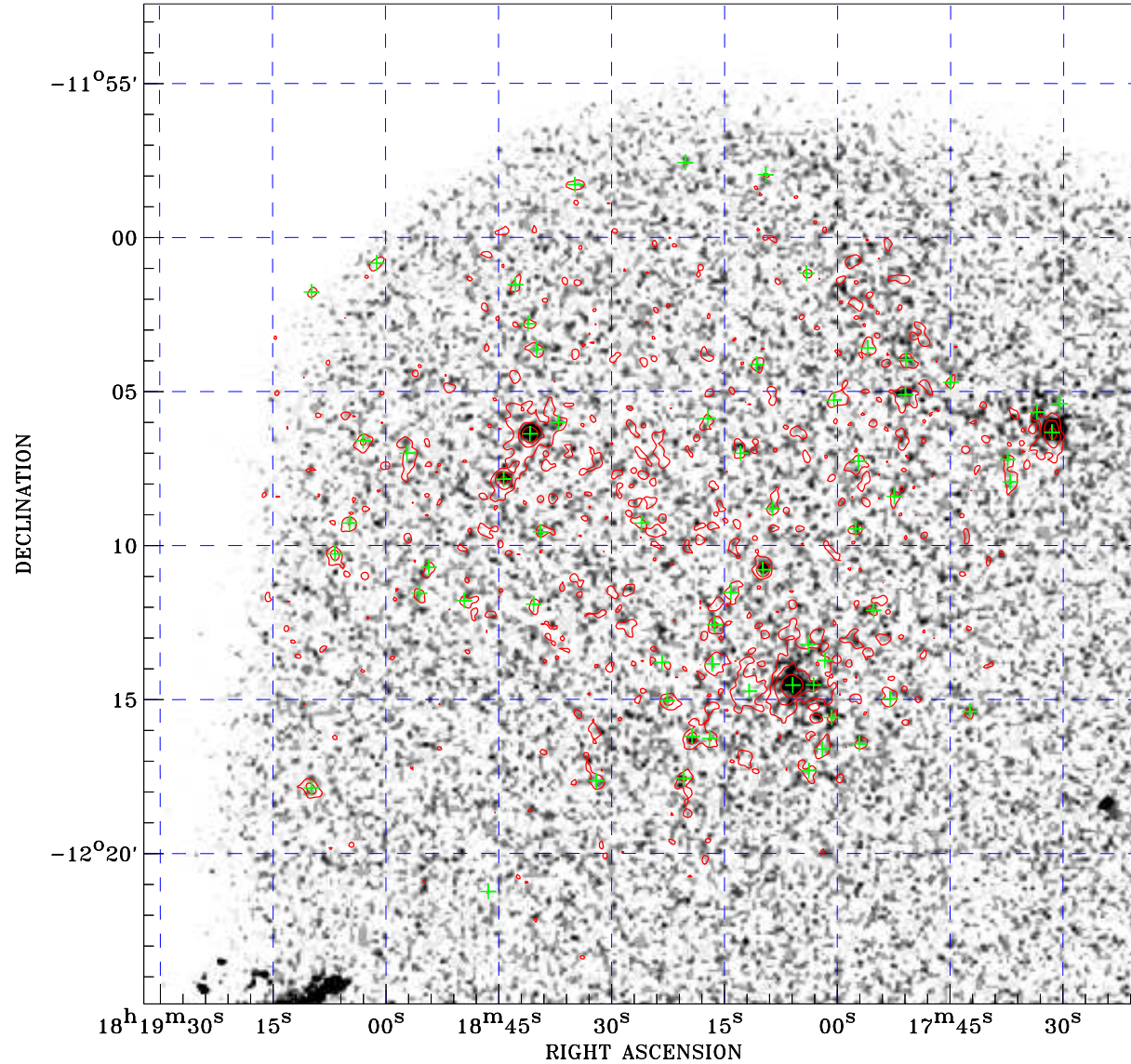


PDF XMM ROSAT image ACDS V10.0



ROSAT image gray scale (Log) :

 $\langle 4.996\text{E}-05$ $\rangle 1.951\text{E}-04$
(counts s⁻¹)

⊙ Epic image contour
levels at 2, 7 and 30 σ

+ Detected Epic sources

Principal Investigator :
Dr Gregor Rauw

XMM target name :
HD168112

Observation ID :
0008820301

Epic image :
 α : 18 18 25.72
 δ : -12 08 39.2
Energy band : 0.2–12.0 keV
MOS1 : 9877 s
MOS2 : 9981 s
PN : 6770 s

Contour levels (counts) :
2 σ :1.309E+00 7 σ :3.161E+00
30 σ :1.168E+01

Nearest ROSAT image
from Epic image center :
Observation : 201995h
Instrument : HRI
 α : 18 18 11.30
 δ : -12 16 00.2

Other ROSAT images :
None

XMM SSC
Apr 20 18:36:17 2019