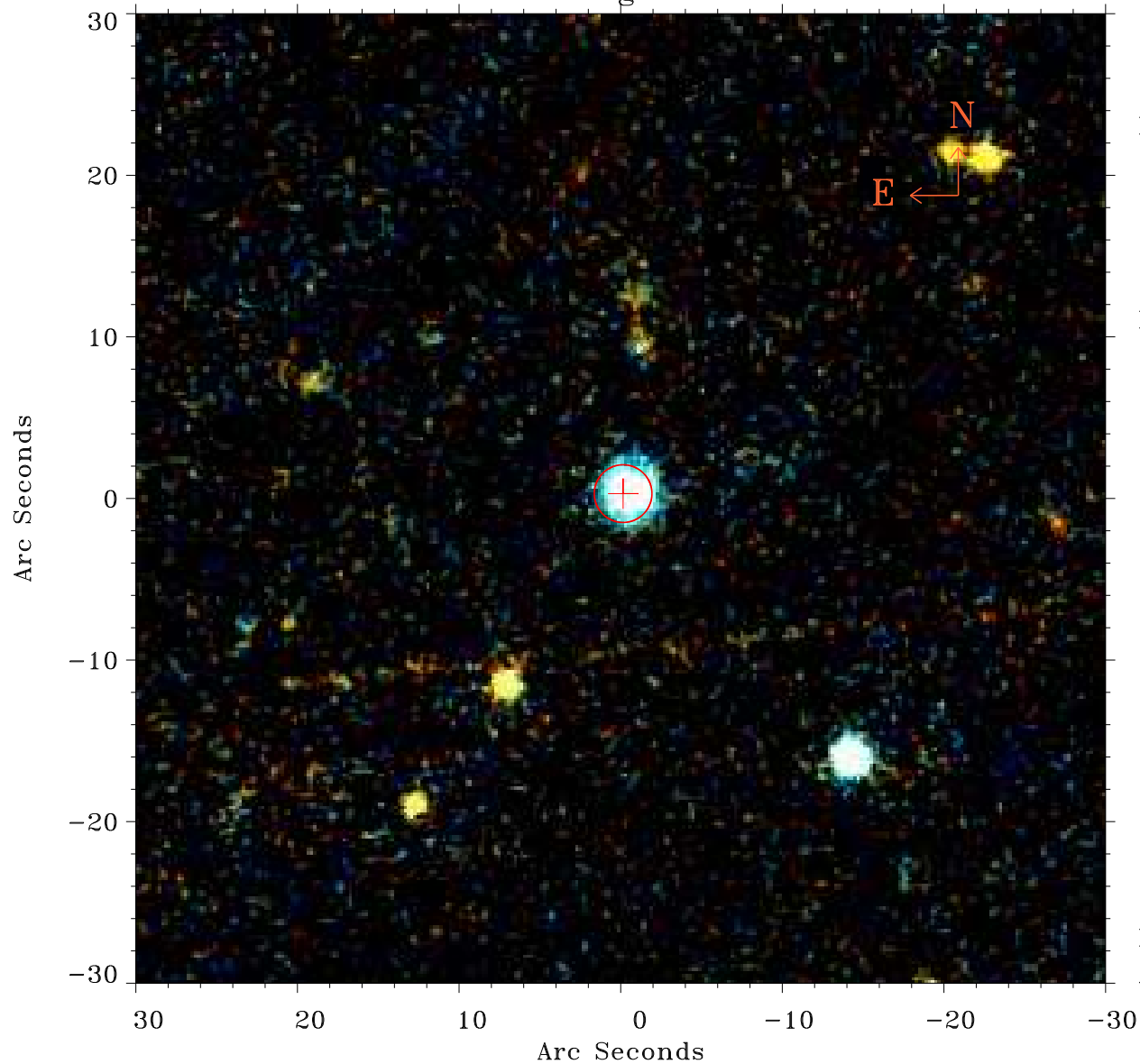


# EPIC source finding chart ACDS V10.0



Principal Investigator :

Dr Ann Zabludoff

XMM target name :

NGC7010

OBS ID : 38540301

Source number : 14

X-ray coordinates :

$\alpha$  : 21 04 00.70

$\delta$  : -12 12 44.8

Center coordinates :

$\alpha$  : 21 04 00.69

$\delta$  : -12 12 44.9

Plate reference :

Origin : PanSTARRS-DR1

Color coding :

z band ●

(z+g)/2 ●

g band ●

Error:

R90 : 1.8 arsec

XMM SSC

Apr 28 08:19:22 2019