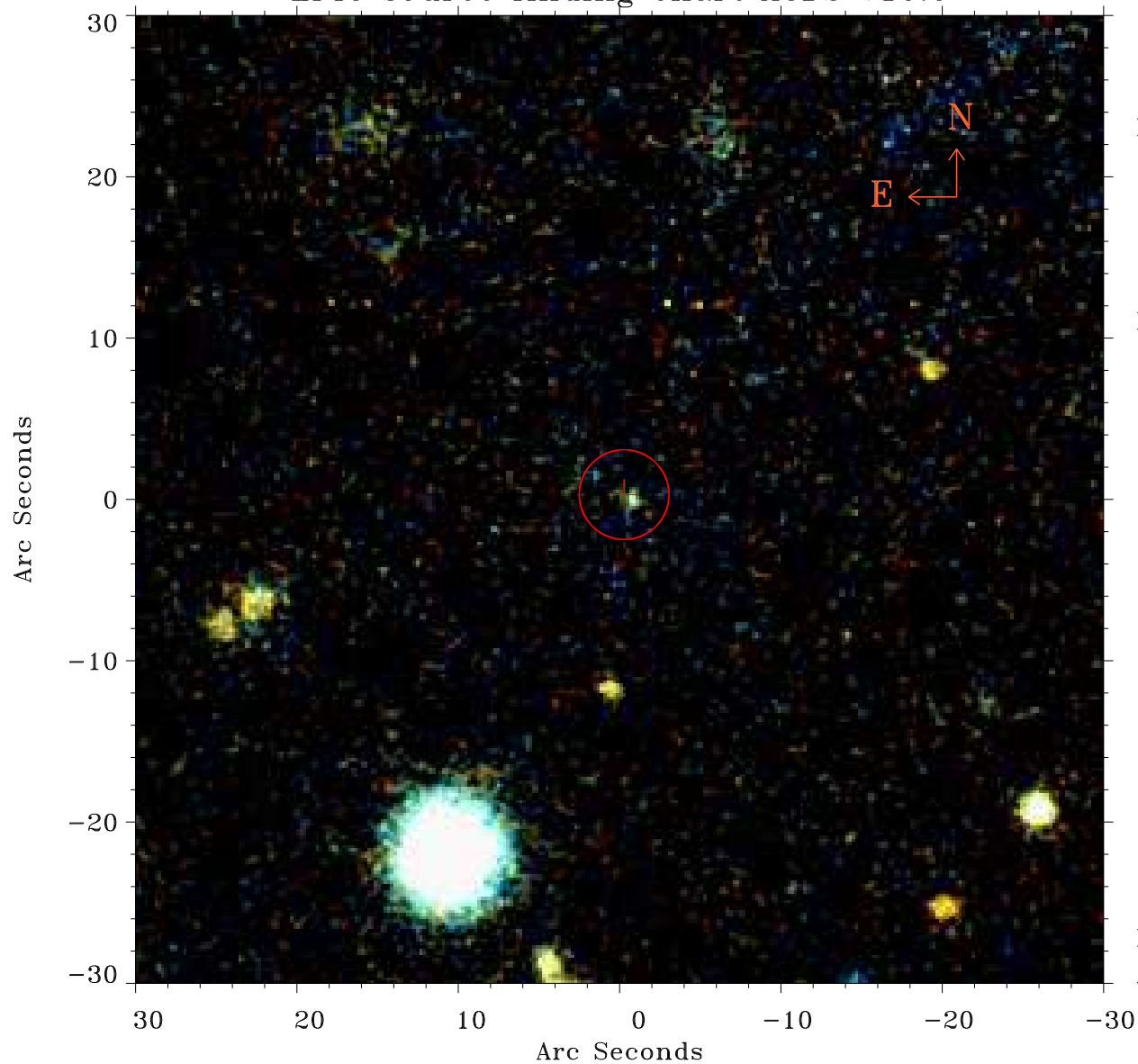


# EPIC source finding chart ACDS V10.0



Principal Investigator :

Dr Ann Zabludoff

XMM target name :

NGC7010

OBS ID : 38540301

Source number : 45

X-ray coordinates :

$\alpha$  : 21 04 37.91

$\delta$  : -12 24 50.1

Center coordinates :

$\alpha$  : 21 04 37.92

$\delta$  : -12 24 50.2

Plate reference :

Origin : PanSTARRS-DR1

Color coding :

z band ●

(z+g)/2 ●

g band ●

Error:

R90 : 2.8 arcsec

XMM SSC

Apr 28 08:24:01 2019