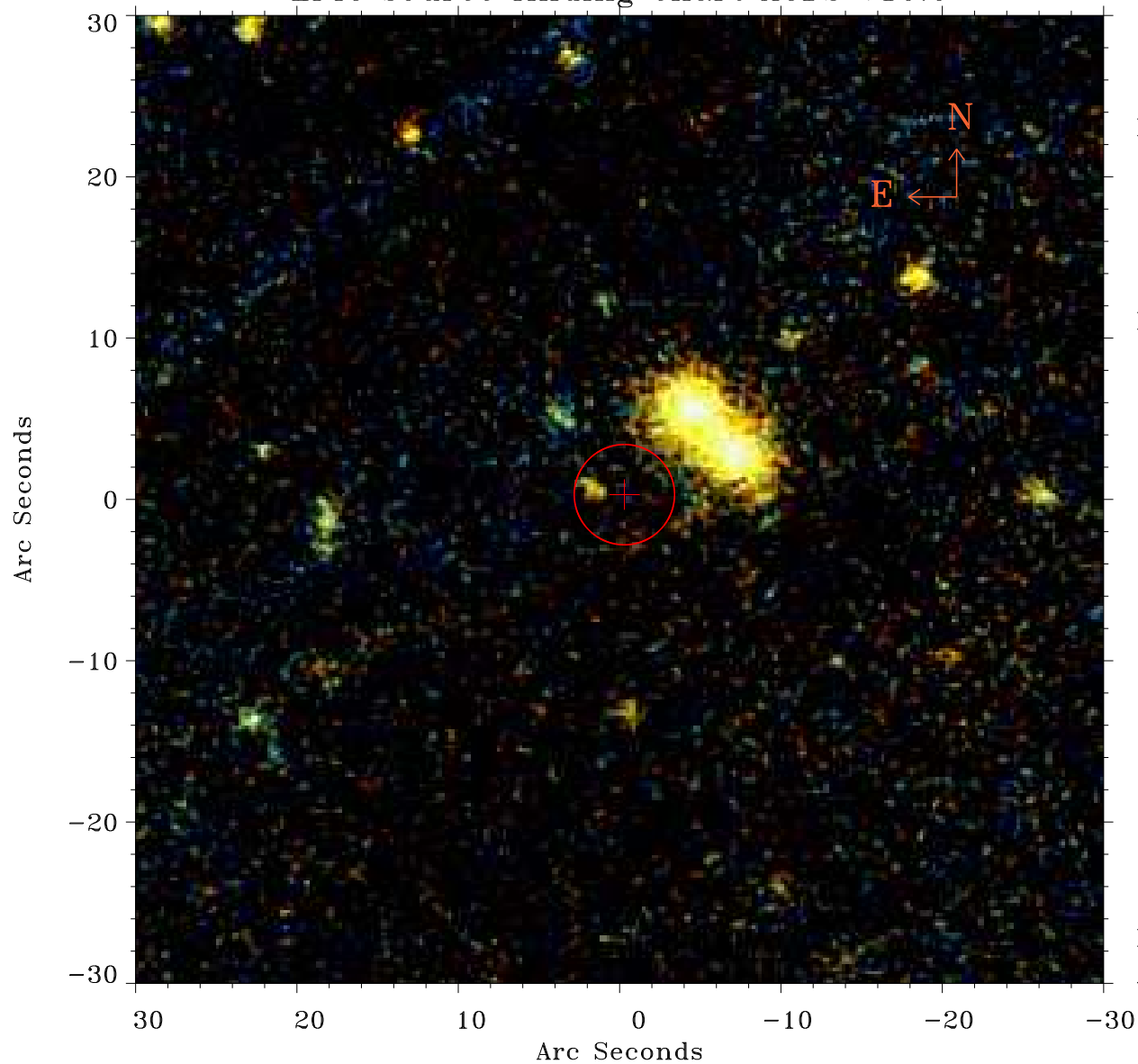


# EPIC source finding chart ACDS V10.0



Principal Investigator :

Dr Bernd Aschenbach

XMM target name :

PKS 2126-158

OBS ID : 103060101

Source number : 50

X-ray coordinates :

$\alpha$  : 21 28 59.85

$\delta$  : -15 38 26.7

Center coordinates :

$\alpha$  : 21 28 59.85

$\delta$  : -15 38 26.8

Plate reference :

Origin : PanSTARRS-DR1

Color coding :

z band ●

(z+g)/2 ●

g band ●

Error:

R90 : 3.1 arcsec

XMM SSC

Apr 27 12:21:42 2019