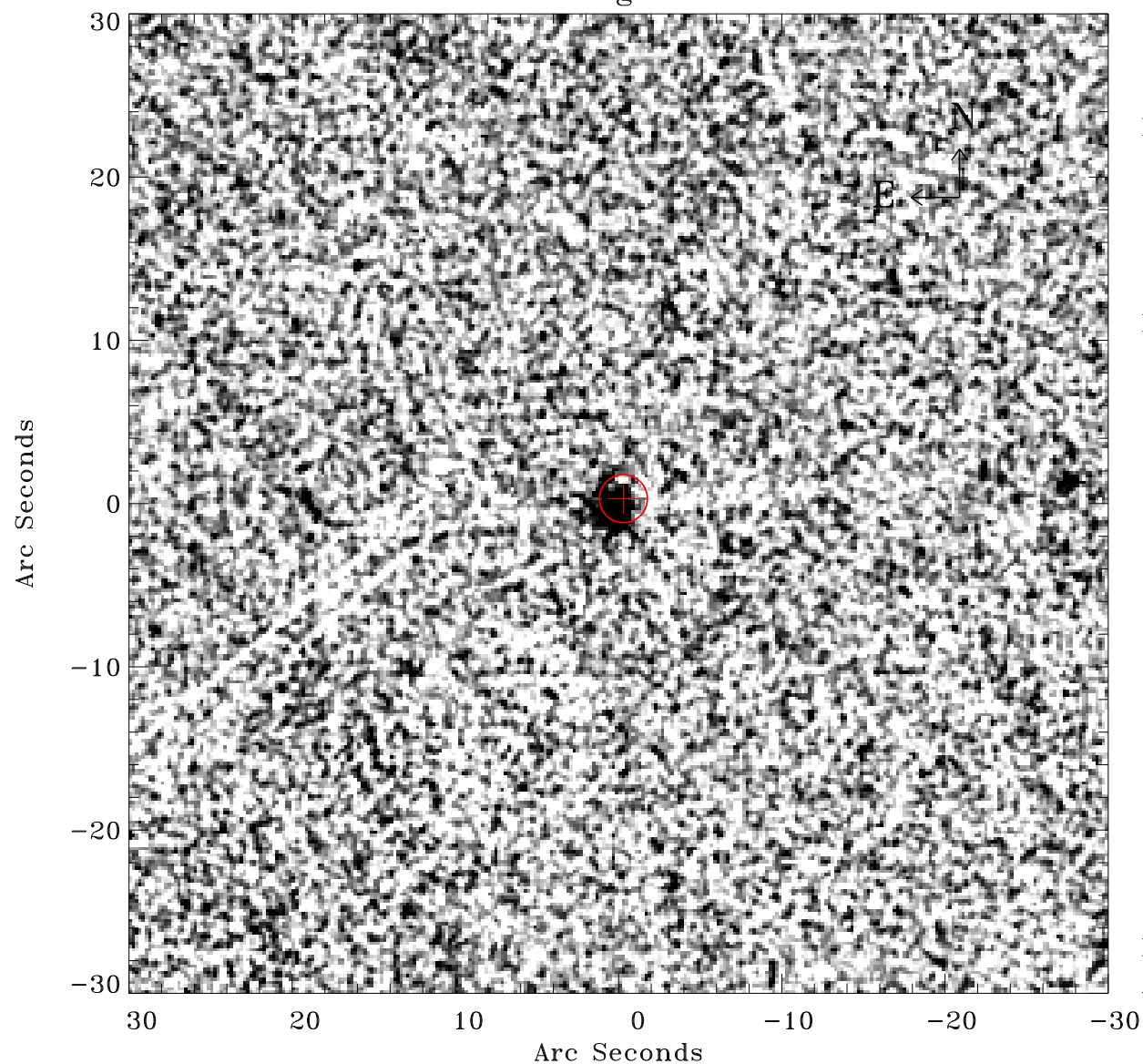


# EPIC source finding chart ACDS V10.0



Principal Investigator :

Dr Michael Watson

XMM target name :

Ton S 180

OBS ID : 110890701

Source number : 9

X-ray coordinates :

$\alpha$  : 00 56 54.08

$\delta$  : -22 30 38.1

Center coordinates :

$\alpha$  : 00 56 54.09

$\delta$  : -22 30 38.2

Plate reference :

Origin : CDS HIPs Network

Plate : PanSTARRS DR1 g

Pixel : 0.20 "/pix

Error circle :

$R_{90}$  (") : 1.5

XMM SSC

Apr 28 10:27:00 2019