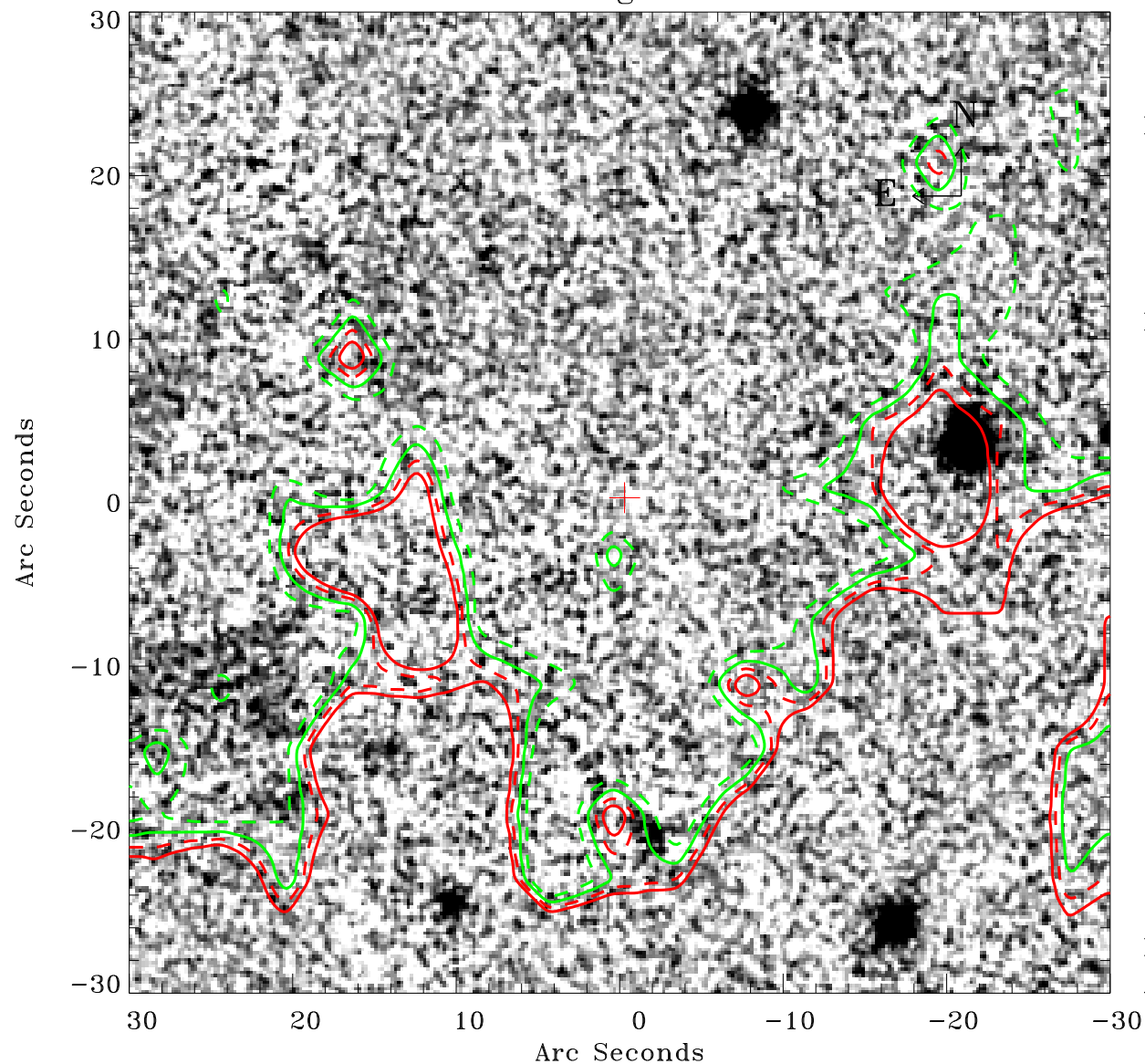


# EPIC source finding chart ACDS V10.0



Principal Investigator :

Dr Michael Watson

XMM target name :

Ton S 180

OBS ID : 110890701

Source number : 15

X-ray coordinates :

$\alpha$  : 00 57 19.98

$\delta$  : -22 21 36.7

Center coordinates :

$\alpha$  : 00 57 19.99

$\delta$  : -22 21 36.8

Plate reference :

Origin : CDS HIPs Network

Plate : PanSTARRS DR1 g

Pixel : 0.20 "/pix

Contour levels (counts) :

6.60E+00 7.64E+00

8.51E+00 9.20E+00

XMM SSC

Apr 28 10:29:25 2019