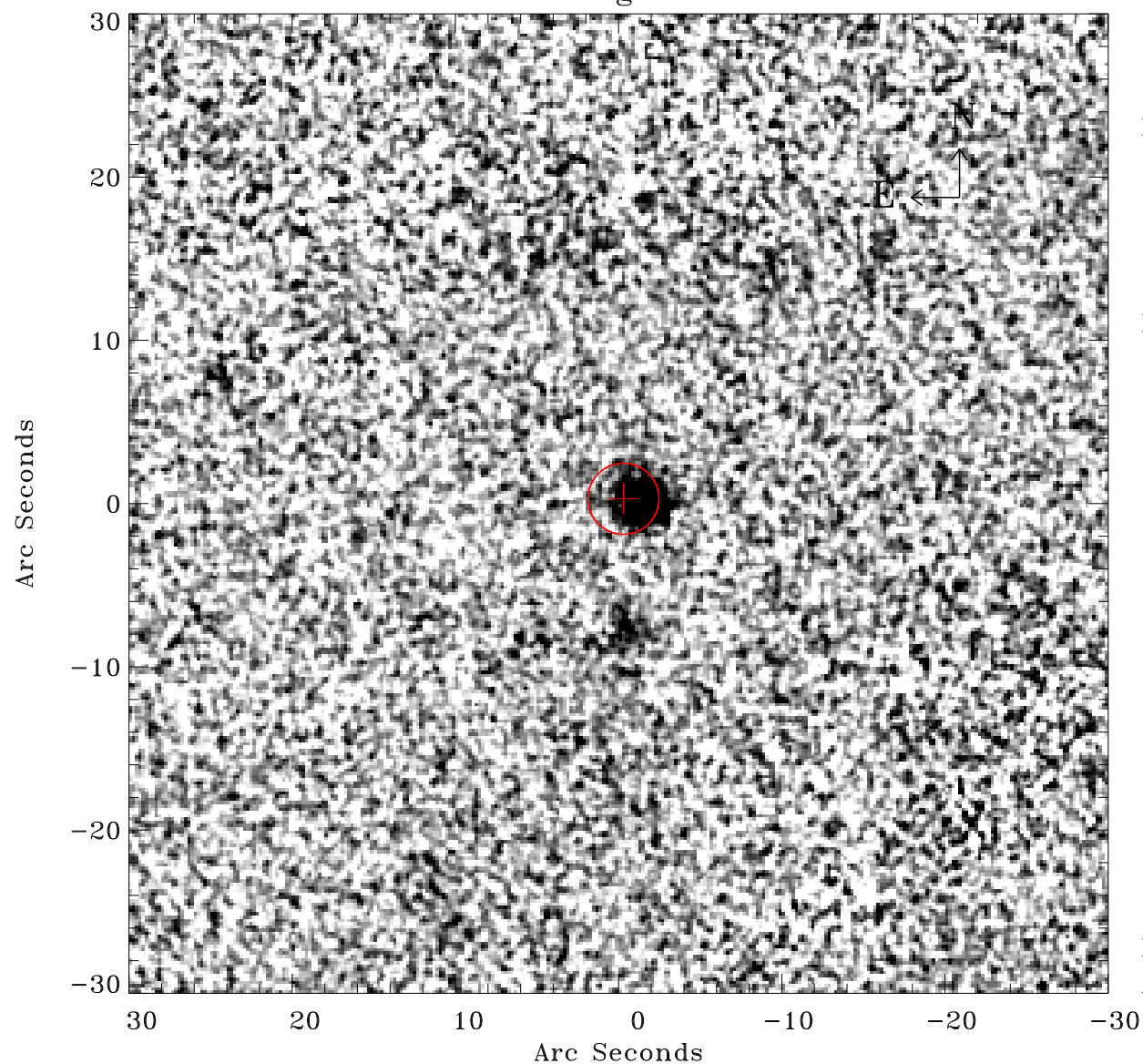


# EPIC source finding chart ACDS V10.0



Principal Investigator :

Dr Michael Watson

XMM target name :

Ton S 180

OBS ID : 110890701

Source number : 17

X-ray coordinates :

$\alpha$  : 00 56 20.11

$\delta$  : -22 21 54.8

Center coordinates :

$\alpha$  : 00 56 20.12

$\delta$  : -22 21 54.9

Plate reference :

Origin : CDS HIPs Network

Plate : PanSTARRS DR1 g

Pixel : 0.20 "/pix

Error circle :

$R_{90}$  (") : 2.2

XMM SSC

Apr 28 10:25:09 2019