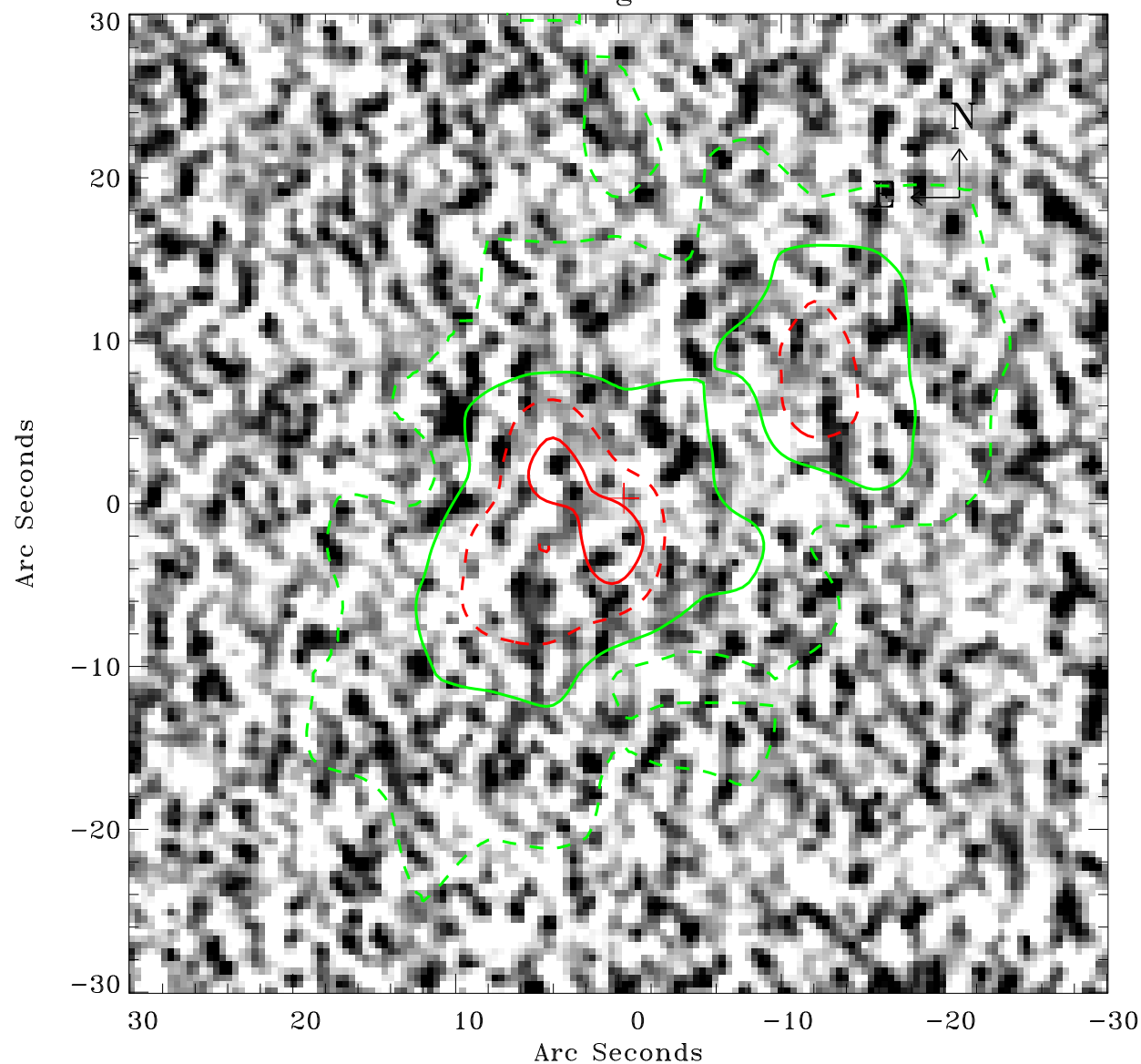


EPIC source finding chart ACDS V10.0



Principal Investigator :

Dr Albert Brinkman

XMM target name :

Gamma2 Velorum

OBS ID : 112670101

Source number : 7

X-ray coordinates :

α : 08 09 39.00

δ : -47 21 35.8

Center coordinates :

α : 08 09 39.00

δ : -47 21 35.7

Plate reference :

Origin : CDS HIPs Network

Plate : MAMA srcj

Pixel : 0.40 "/pix

Contour levels (counts) :

--- 1.00E+00 --- 3.99E+00

--- 7.96E+00 --- 1.21E+01

XMM SSC

Apr 26 17:35:13 2019