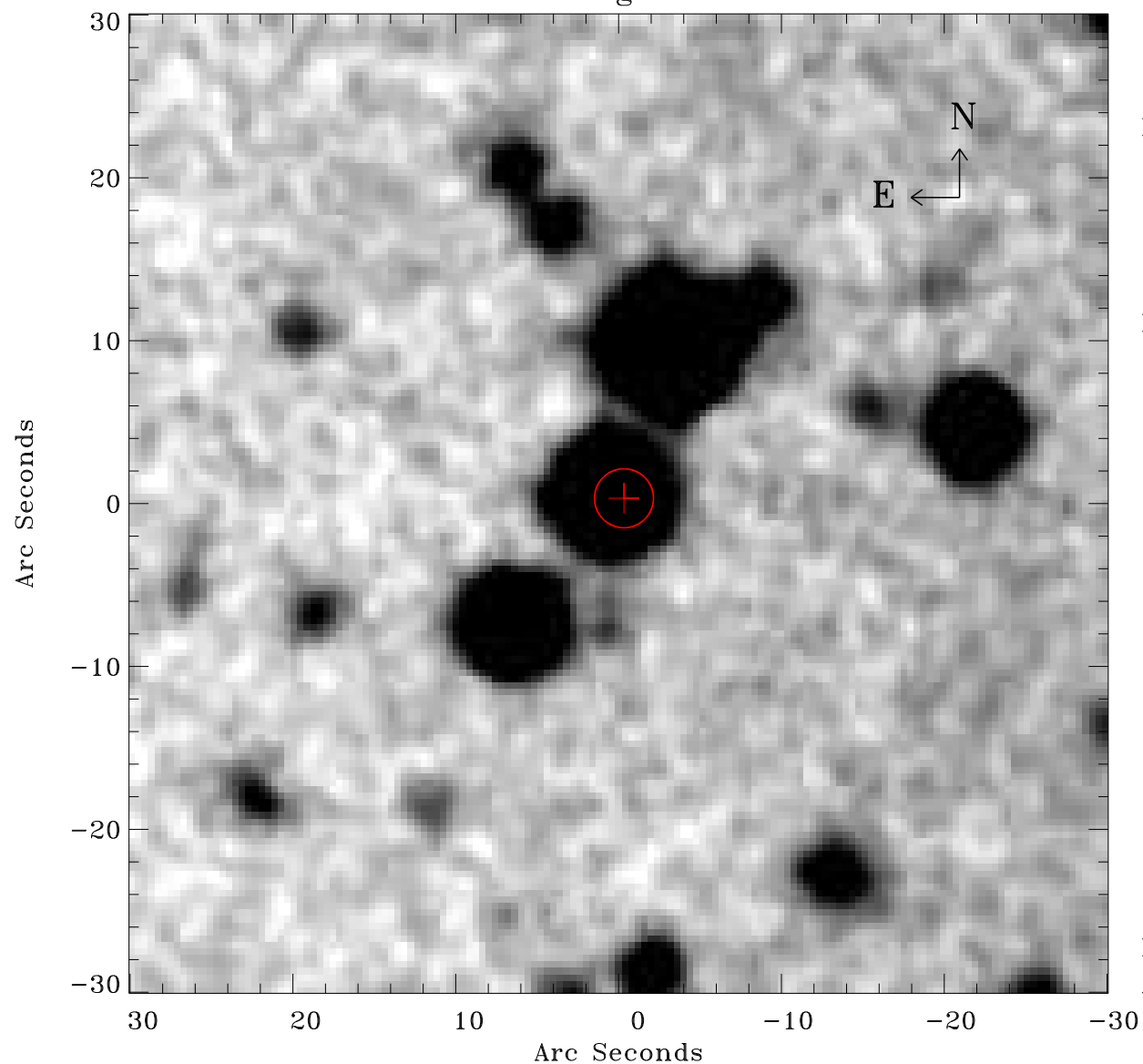


# EPIC source finding chart ACDS V10.0



Principal Investigator :

Dr Albert Brinkman

XMM target name :

Gamma2 Velorum

OBS ID : 112670101

Source number : 17

X-ray coordinates :

$\alpha$  : 08 10 30.11

$\delta$  : -47 26 14.3

Center coordinates :

$\alpha$  : 08 10 30.10

$\delta$  : -47 26 14.2

Plate reference :

Origin : CDS HIPs Network

Plate : MAMA srcj

Pixel : 0.40 "/pix

Error circle :

$R_{90}$  (") : 1.8

XMM SSC

Apr 26 17:38:56 2019