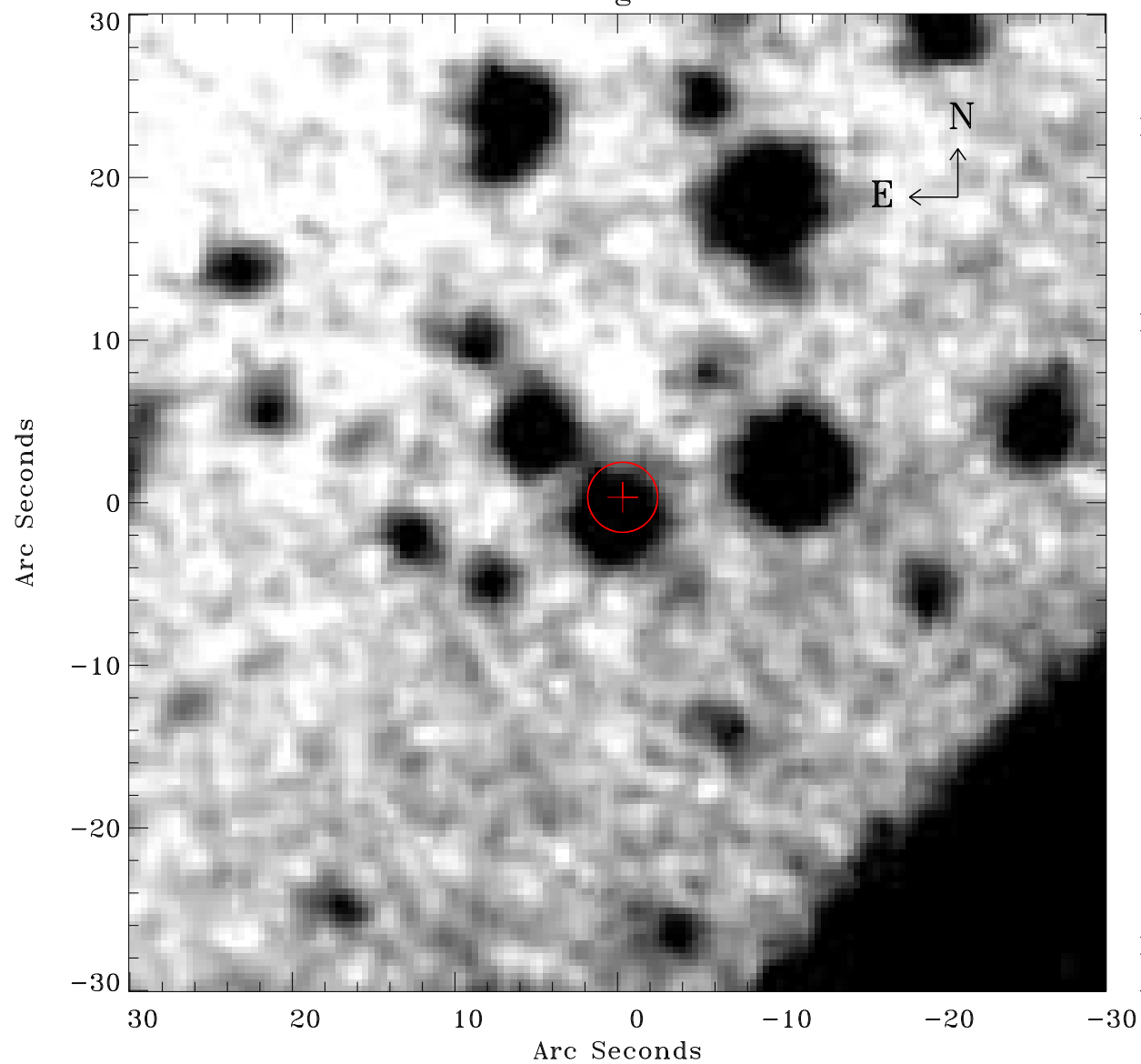


# EPIC source finding chart ACDS V10.0



Principal Investigator :

Dr Albert Brinkman

XMM target name :

Gamma2 Velorum

OBS ID : 112670101

Source number : 40

X-ray coordinates :

$\alpha$  : 08 09 58.39

$\delta$  : -47 15 47.3

Center coordinates :

$\alpha$  : 08 09 58.38

$\delta$  : -47 15 47.2

Plate reference :

Origin : CDS HIPs Network

Plate : MAMA srcj

Pixel : 0.40 "/pix

Error circle :

$R_{90}$  (") : 2.1

XMM SSC

Apr 26 17:37:53 2019