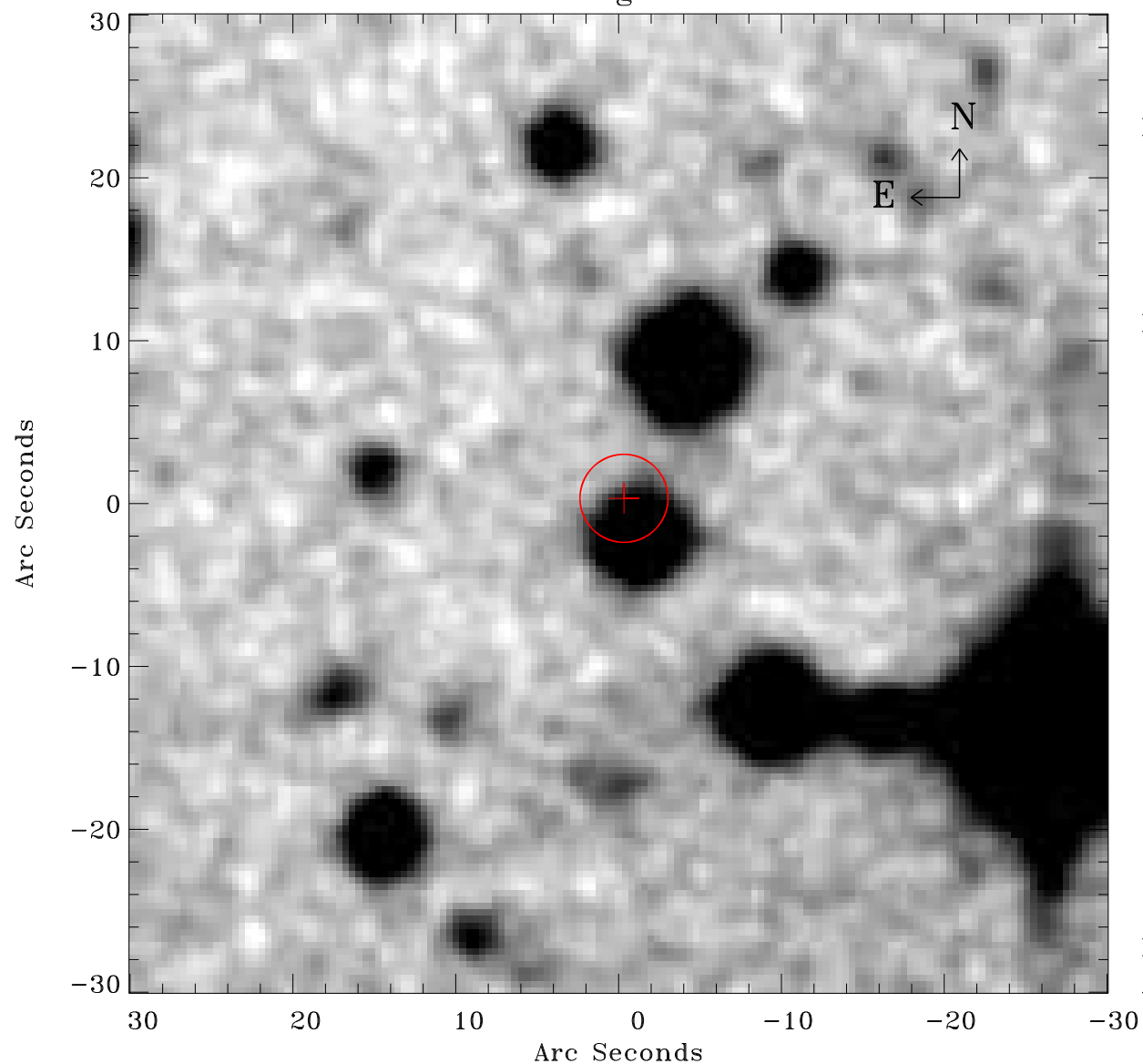


# EPIC source finding chart ACDS V10.0



Principal Investigator :

Dr Albert Brinkman

XMM target name :

Gamma2 Velorum

OBS ID : 112670101

Source number : 48

X-ray coordinates :

$\alpha$  : 08 09 47.78

$\delta$  : -47 08 34.7

Center coordinates :

$\alpha$  : 08 09 47.77

$\delta$  : -47 08 34.6

Plate reference :

Origin : CDS HIPs Network

Plate : MAMA srcj

Pixel : 0.40 "/pix

Error circle :

$R_{90}$  (") : 2.7

XMM SSC

Apr 26 17:36:04 2019