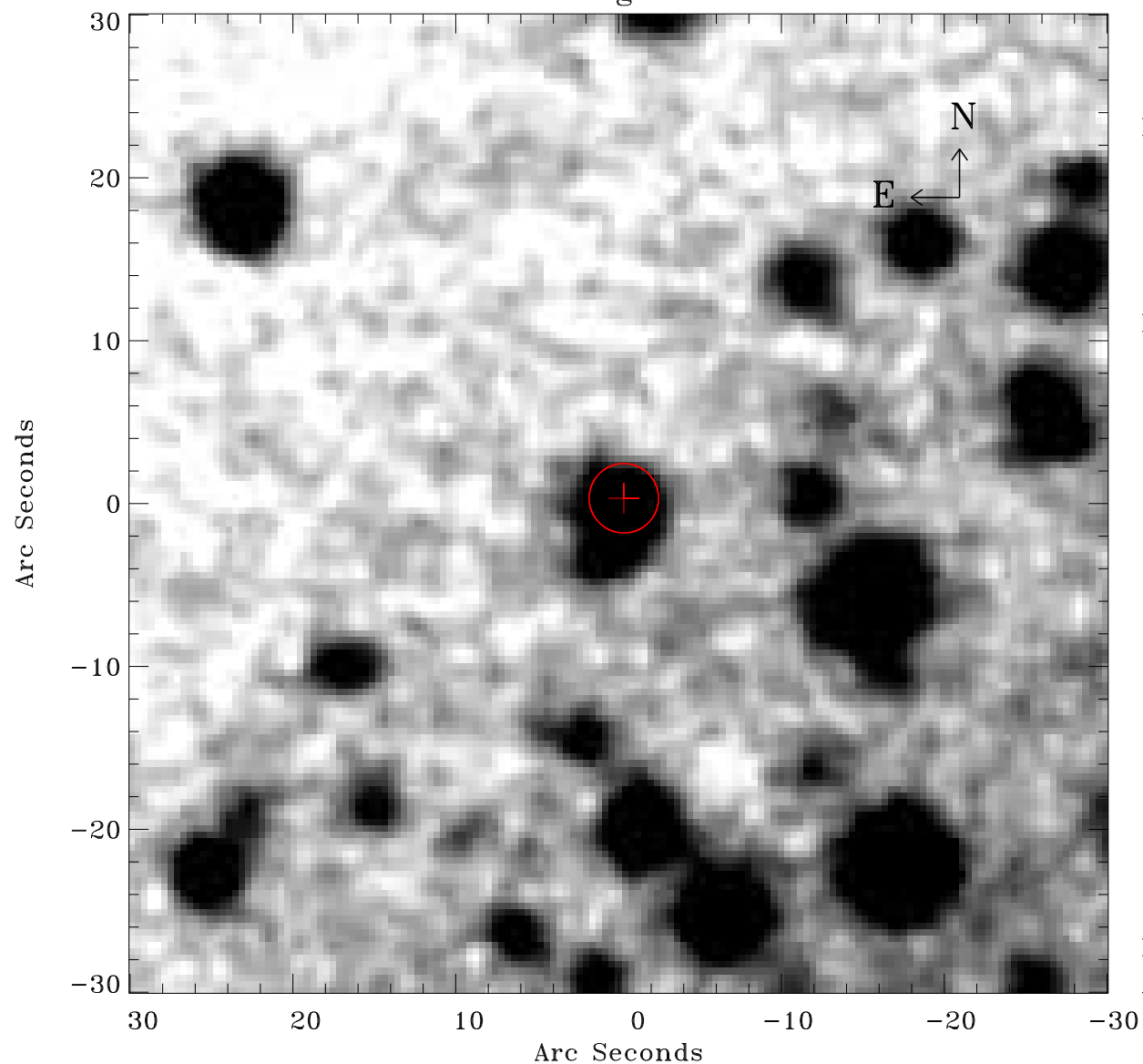


# EPIC source finding chart ACDS V10.0



Principal Investigator :

Dr Albert Brinkman

XMM target name :

Gamma2 Velorum

OBS ID : 112670101

Source number : 55

X-ray coordinates :

$\alpha$  : 08 09 59.03

$\delta$  : -47 15 22.6

Center coordinates :

$\alpha$  : 08 09 59.02

$\delta$  : -47 15 22.6

Plate reference :

Origin : CDS HIPs Network

Plate : MAMA srcj

Pixel : 0.40 "/pix

Error circle :

$R_{90}$  (") : 2.1

XMM SSC

Apr 26 17:37:59 2019