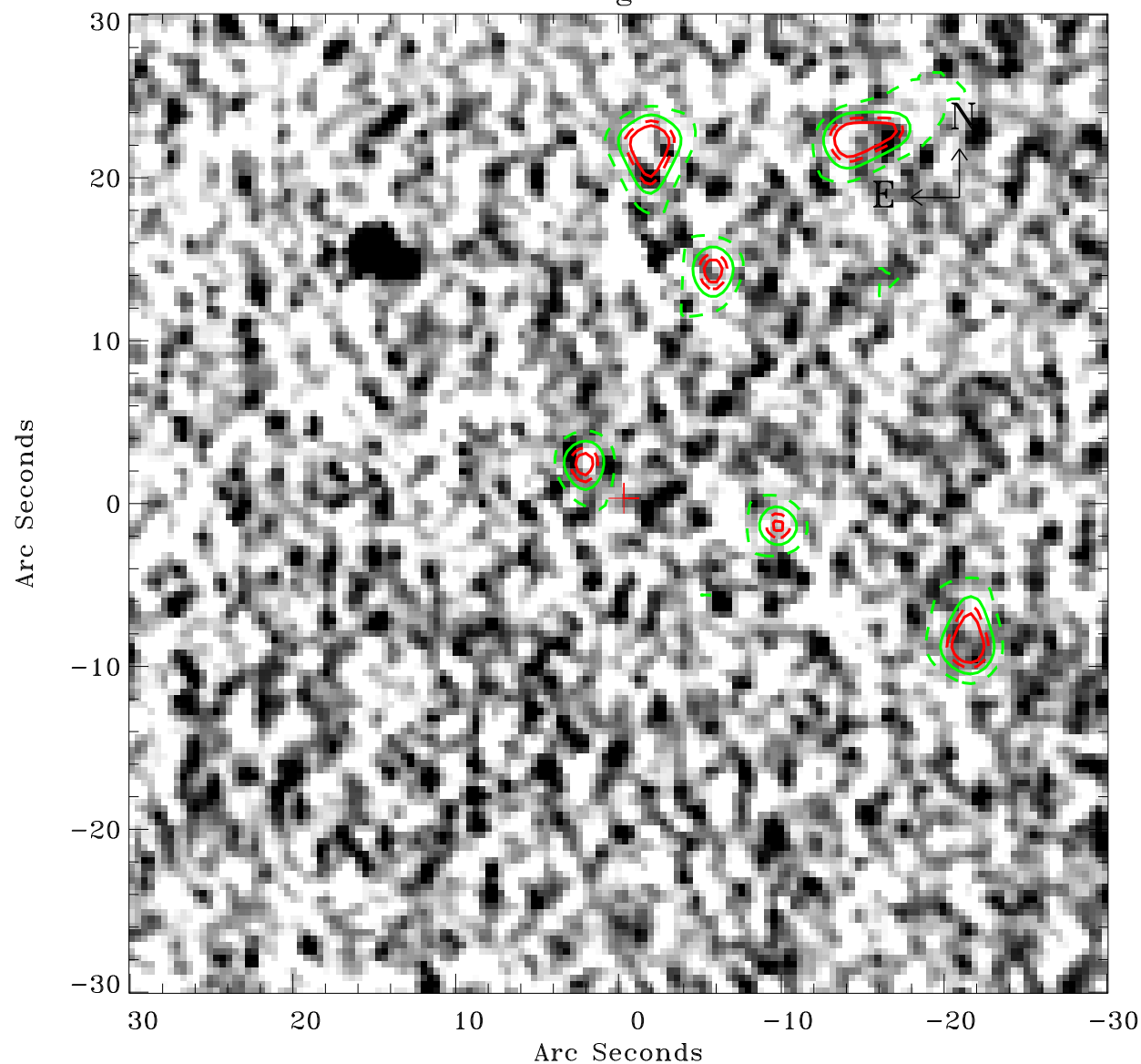


EPIC source finding chart ACDS V10.0



Principal Investigator :

Dr Albert Brinkman

XMM target name :

Gamma2 Velorum

OBS ID : 112670101

Source number : 58

X-ray coordinates :

α : 08 09 49.43

δ : -47 20 00.7

Center coordinates :

α : 08 09 49.42

δ : -47 20 00.6

Plate reference :

Origin : CDS HIPs Network

Plate : MAMA srcj

Pixel : 0.40 "/pix

Contour levels (counts) :

1.00E+00 1.38E+00

1.61E+00 1.77E+00

XMM SSC

Apr 26 17:36:10 2019