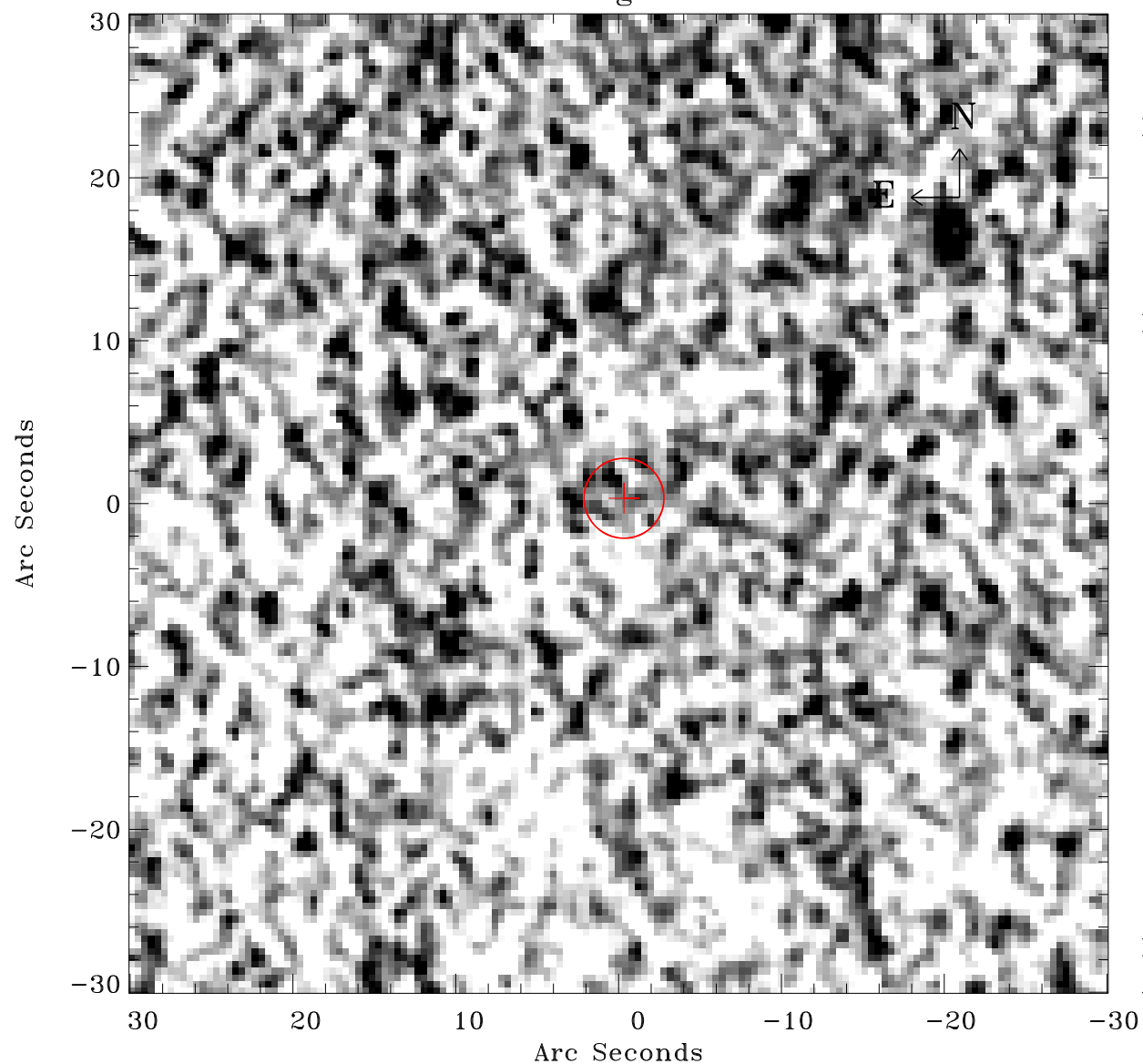


# EPIC source finding chart ACDS V10.0



Principal Investigator :

Dr Albert Brinkman

XMM target name :

Gamma2 Velorum

OBS ID : 112670201

Source number : 88

X-ray coordinates :

$\alpha$  : 08 09 31.57

$\delta$  : -47 24 30.6

Center coordinates :

$\alpha$  : 08 09 31.57

$\delta$  : -47 24 30.5

Plate reference :

Origin : CDS HIPs Network

Plate : MAMA srcj

Pixel : 0.40 "/pix

Error circle :

$R_{90}$  (") : 2.4

XMM SSC

Apr 20 11:46:52 2019