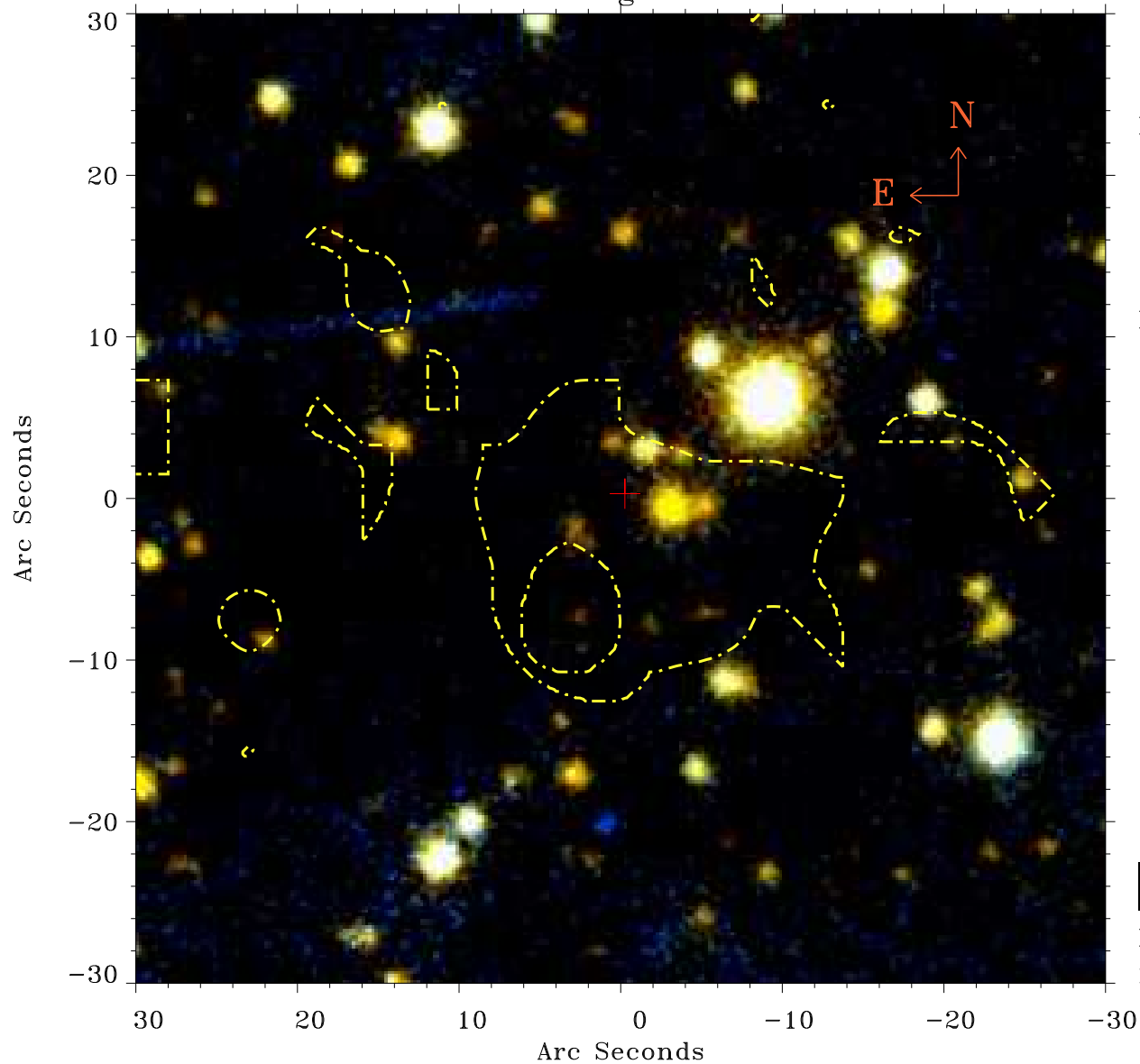


# EPIC source finding chart ACDS V10.0



Principal Investigator :

Prof Robert Warwick

XMM target name :

NXGPS°30

OBS ID : 152833001

Source number : 4

X-ray coordinates :

$\alpha$  : 18 08 59.33

$\delta$  : -20 05 07.8

Center coordinates :

$\alpha$  : 18 08 59.33

$\delta$  : -20 05 07.9

Plate reference :

Origin : PanSTARRS-DR1

Color coding :

z band ●

(z+g)/2 ●

g band ●

Contour levels (counts) :



XMM SSC

May 1 17:27:14 2019