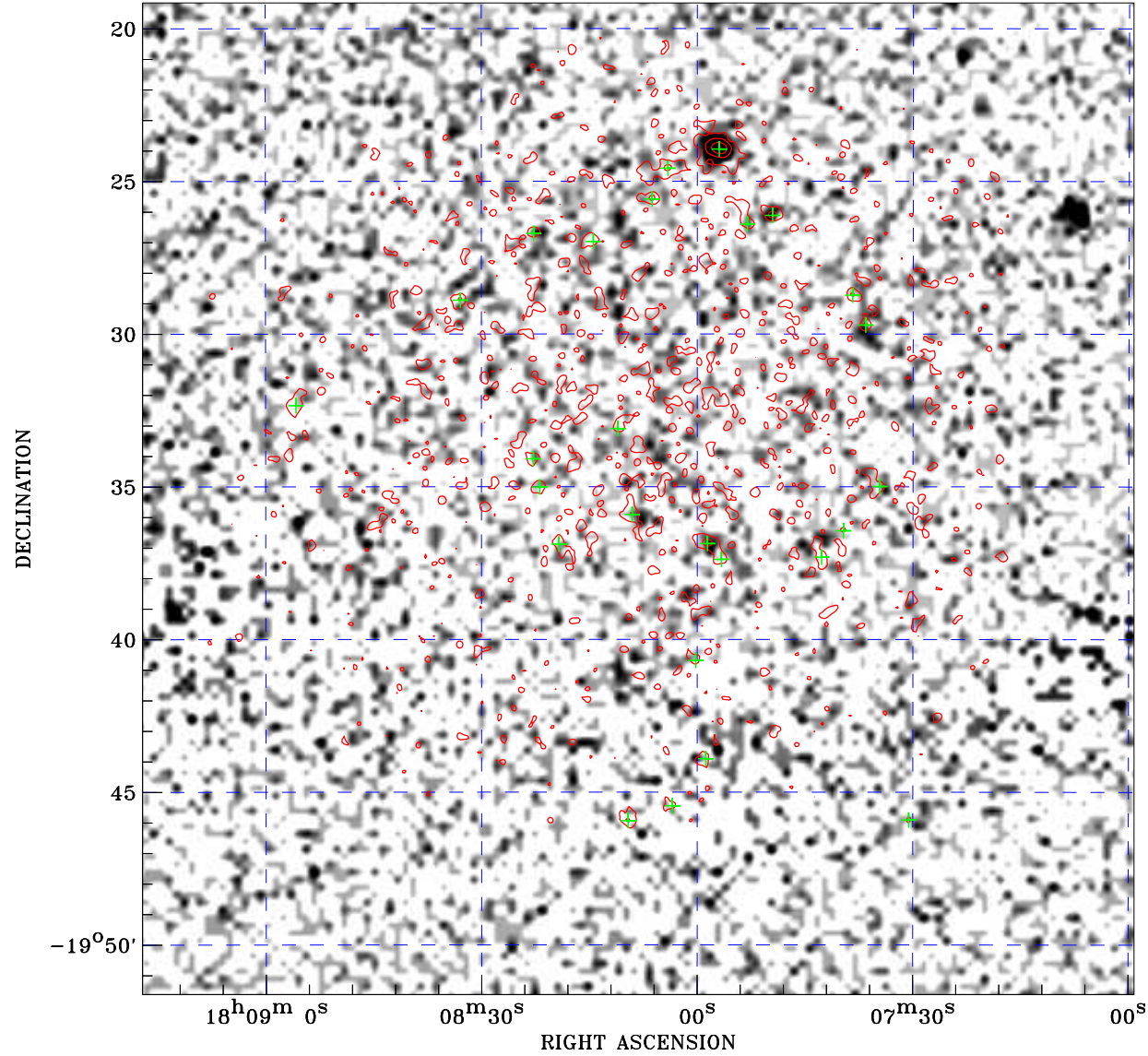


PDF XMM ROSAT image ACDS V10.0



ROSAT image gray scale (Log) :
 $\langle 7.588\text{E-}05$ $\rangle 4.437\text{E-}04$
 (counts s⁻¹)

⊙ Epic image contour
 levels at 2, 7 and 30 σ

+ Detected Epic sources

Principal Investigator :
 Prof Robert Warwick

XMM target name :
 NXGPS_31

Observation ID :
 0152833101

Epic image :
 α : 18 08 08.20
 δ : -19 35 23.7
 Energy band : 0.2-12.0 keV
 MOS1 : 8665 s
 MOS2 : 8671 s
 PN : 6816 s

Contour levels (counts) :
 2 σ :8.314E-01 7 σ :2.011E+00
 30 σ :7.438E+00

Nearest ROSAT image
 from Epic image center :
 Observation : 200717p
 Instrument : PSPCB
 α : 18 08 10.31
 δ : -19 27 00.2

Other ROSAT images :
 None

XMM SSC
 Apr 22 00:55:40 2019