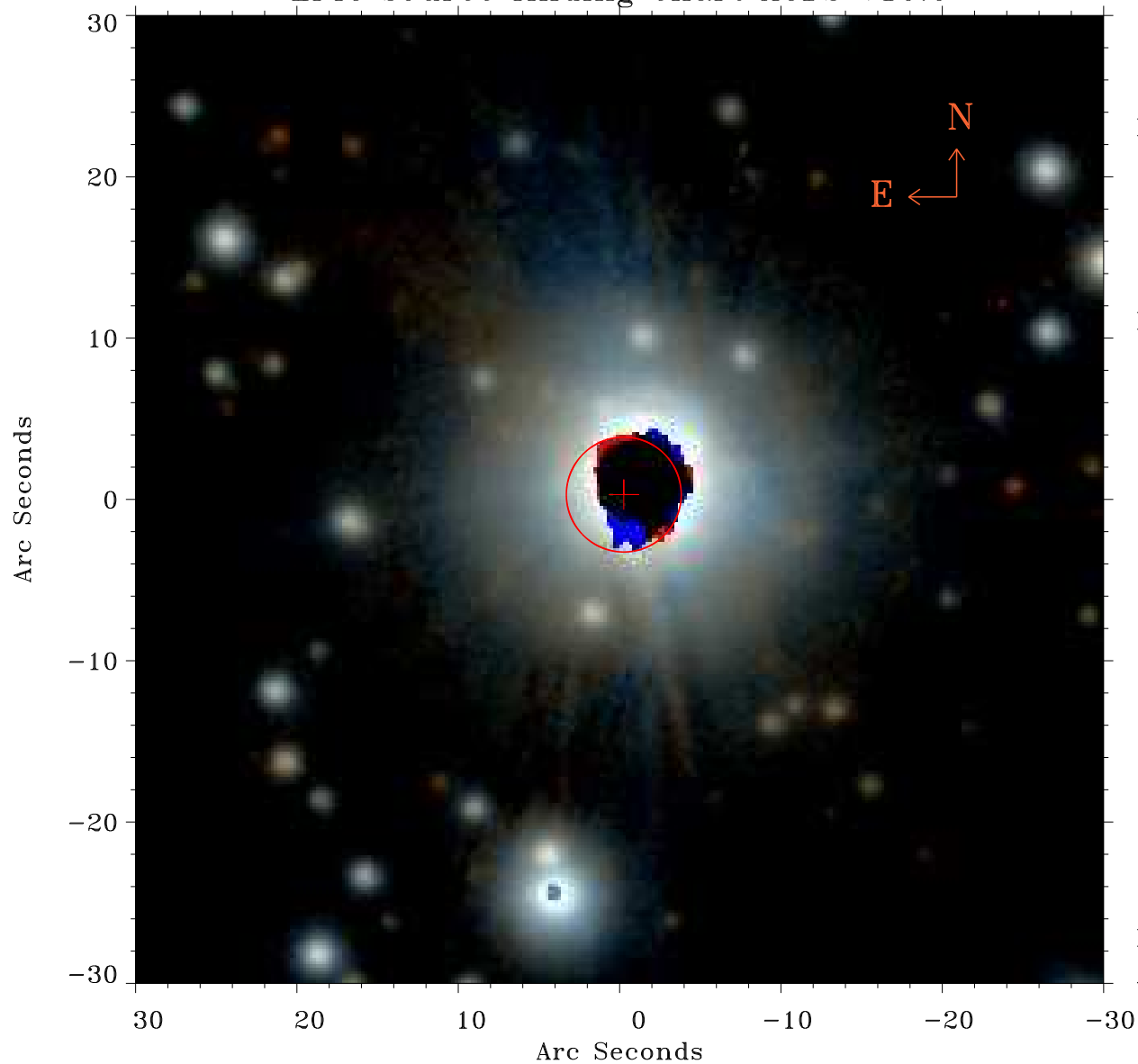


# EPIC source finding chart ACDS V10.0



Principal Investigator :

Dr FABIO FAVATA

XMM target name :

61 CYG A/B

OBS ID : 202610501

Source number : 10

X-ray coordinates :

$\alpha$  : 21 06 30.82

$\delta$  : +38 45 31.0

Center coordinates :

$\alpha$  : 21 06 30.83

$\delta$  : +38 45 30.9

Plate reference :

Origin : PanSTARRS-DR1

Color coding :

z band ●

(z+g)/2 ●

g band ●

Error:

R90 : 3.5 arsec

XMM SSC

Apr 28 12:38:30 2019