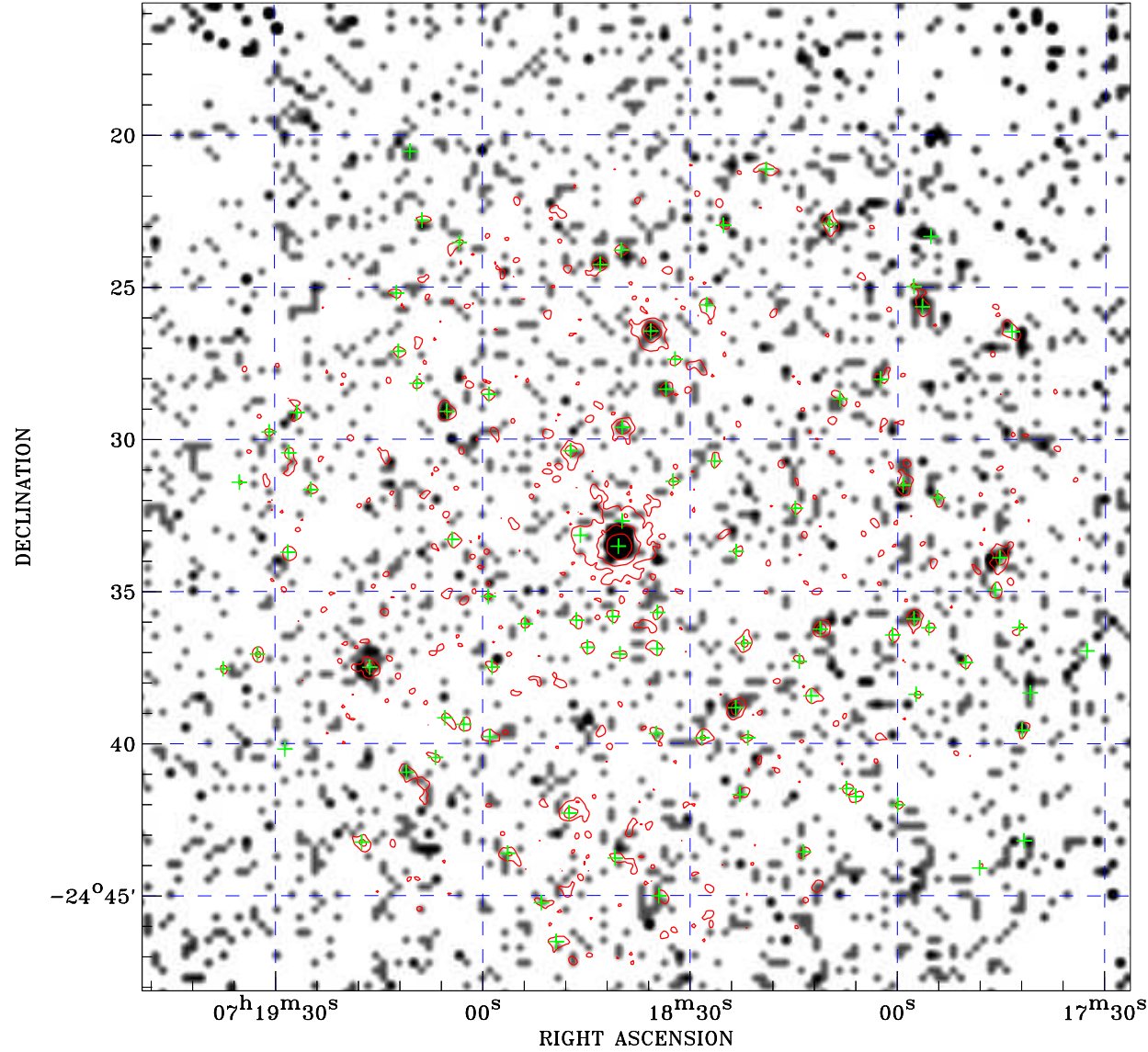



PDF XMM ROSAT image ACDS V10.0



ROSAT image gray scale (Log) :

 $\langle 7.259\text{E-}05$ $\rangle 5.846\text{E-}04$
 (counts s⁻¹)

⊙ Epic image contour
 levels at 2, 7 and 30 σ

+ Detected Epic sources

Principal Investigator :
 Dr JULIAN PITTARD

XMM target name :
 HD 57060

Observation ID :
 0205650601

Epic image :
 α : 07 18 37.79
 δ : -24 31 54.0
 Energy band : 0.2-12.0 keV
 MOS1 : 21666 s
 MOS2 : 21668 s
 PN : 17730 s

Contour levels (counts) :
 2 σ :1.467E+00 7 σ :3.324E+00
 30 σ :1.187E+01

Nearest ROSAT image
 from Epic image center :
 Observation : 200112p
 Instrument : PSPCB
 α : 07 18 54.02
 δ : -24 36 36.2

Other ROSAT images :
 None

XMM SSC
 May 3 01:59:15 2019