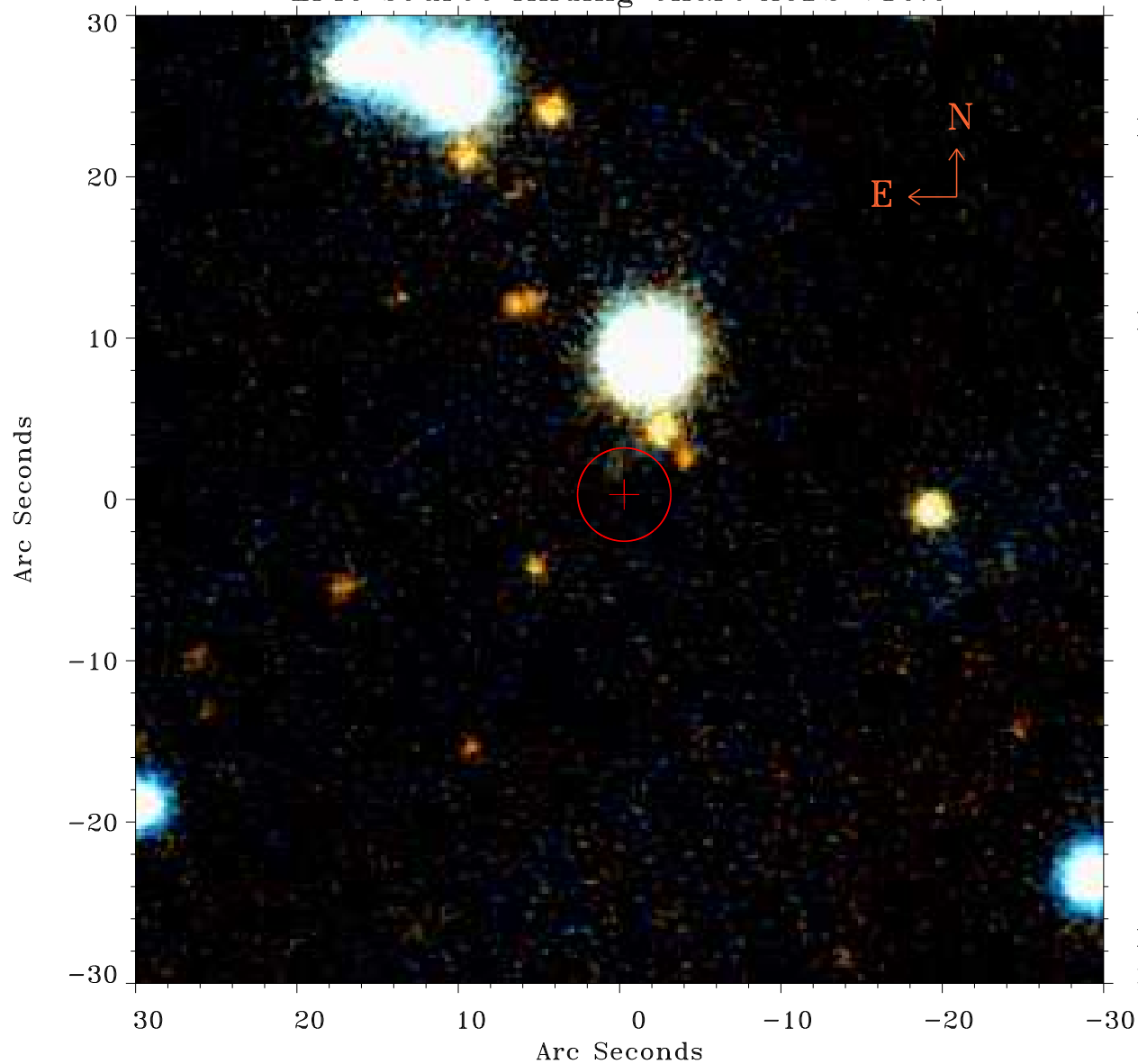


# EPIC source finding chart ACDS V10.0



Principal Investigator :  
Dr Norbert Schartel (DDT)

XMM target name :  
ESO 490-G026 SWIFT

OBS ID : 312190801  
Source number : 47

X-ray coordinates :  
 $\alpha$  : 06 39 32.23  
 $\delta$  : -25 53 12.8

Center coordinates :  
 $\alpha$  : 06 39 32.24  
 $\delta$  : -25 53 12.9

Plate reference :  
Origin : PanSTARRS-DR1

Color coding :  
z band ●  
(z+g)/2 ●  
g band ●

Error:  
R90 : 2.9 arsec

XMM SSC  
May 9 16:39:35 2019