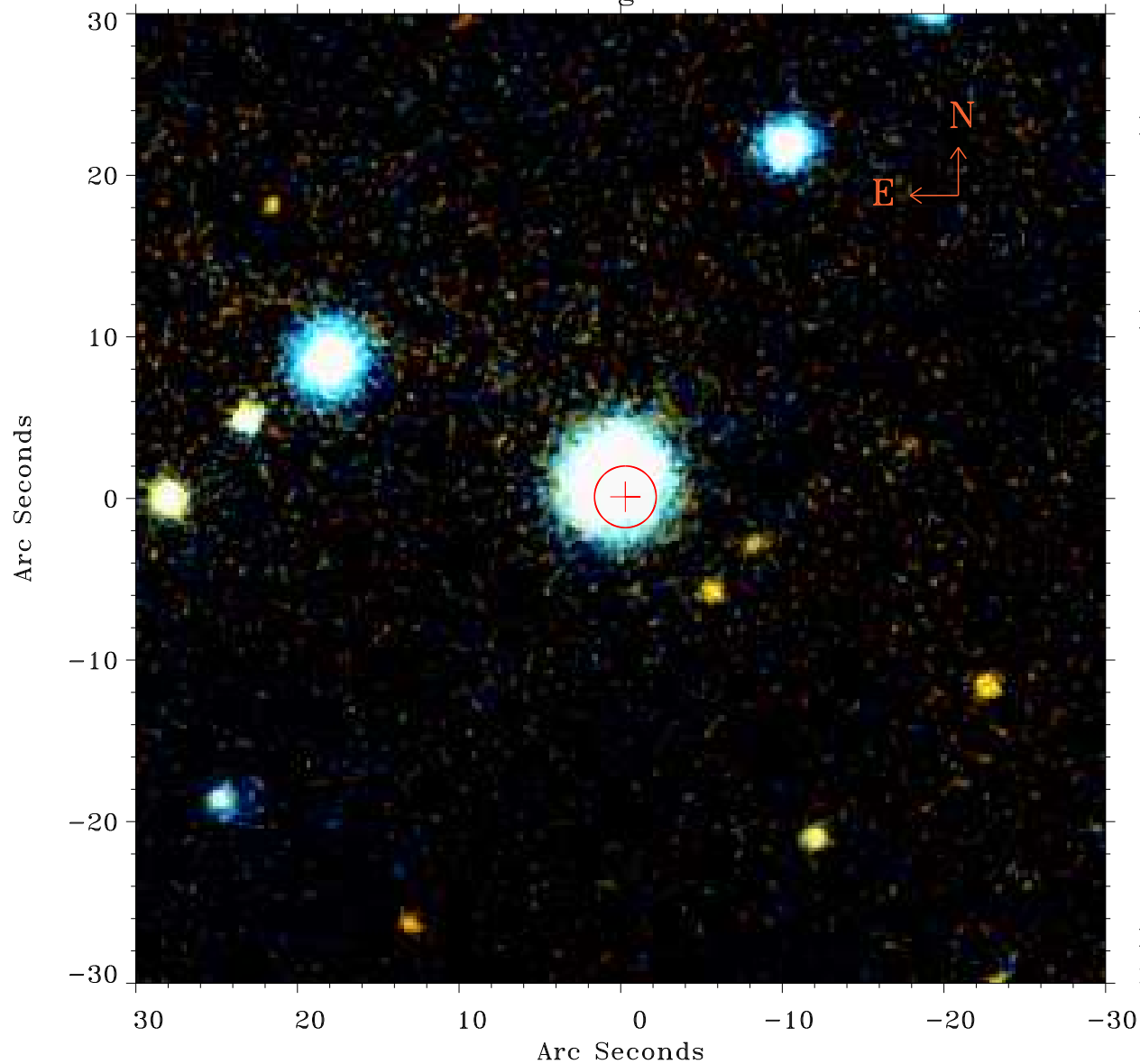


# EPIC source finding chart ACDS V10.0



Principal Investigator :  
Dr Norbert Schartel (DDT)

XMM target name :  
ESO 490-G026 SWIFT

OBS ID : 312190801  
Source number : 22

X-ray coordinates :  
 $\alpha$  : 06 40 13.18  
 $\delta$  : -25 51 00.2

Center coordinates :  
 $\alpha$  : 06 40 13.19  
 $\delta$  : -25 51 00.1

Plate reference :  
Origin : PanSTARRS-DR1

Color coding :  
z band ●  
(z+g)/2 ●  
g band ●

Error:  
R90 : 1.9 arsec

XMM SSC  
May 9 16:41:44 2019