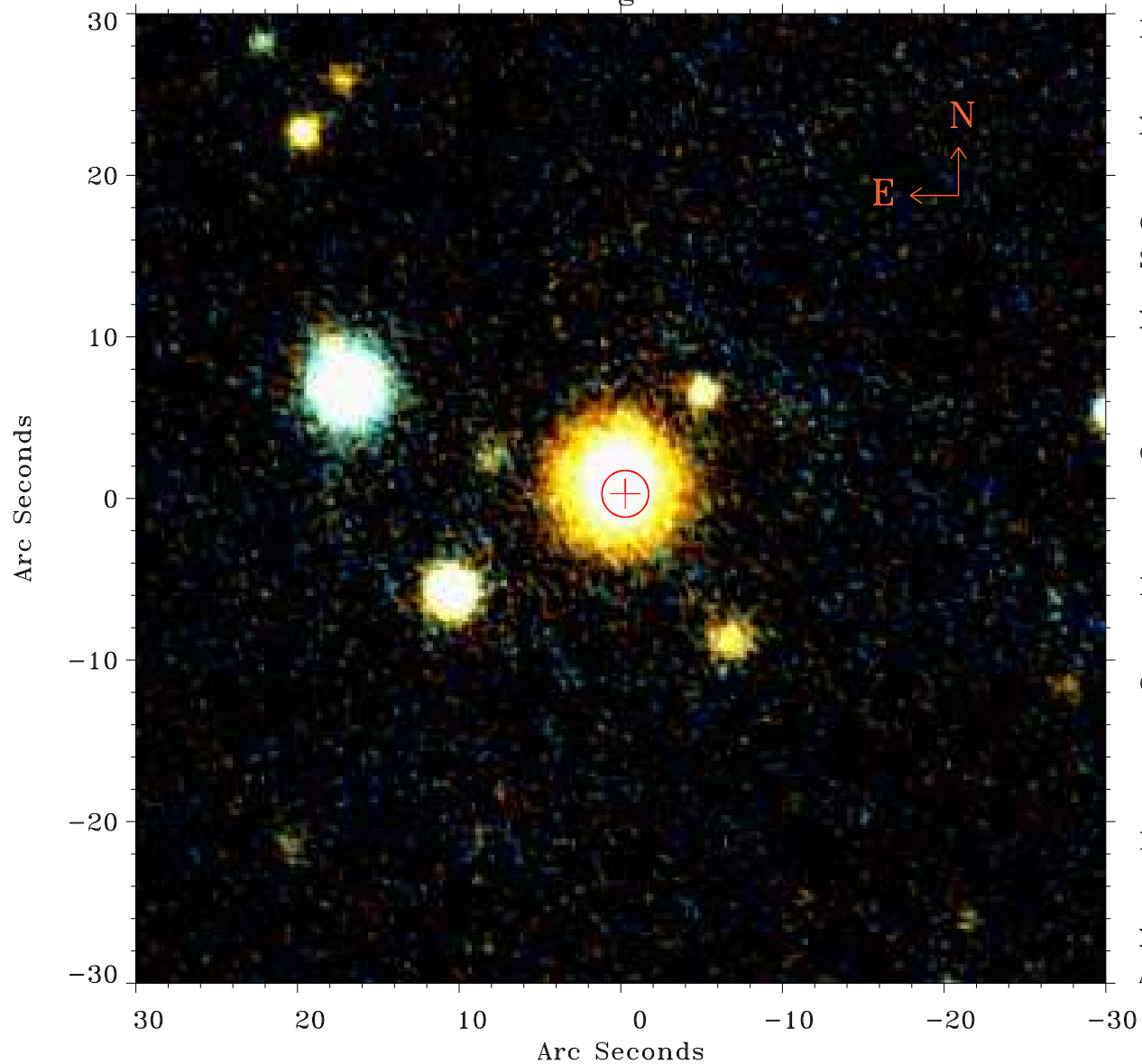


# EPIC source finding chart ACDS V10.0



Principal Investigator :

Dr Fabrizio Fiore

XMM target name :

AMS14°16°17

OBS ID : 406424501

Source number : 2

X-ray coordinates :

$\alpha$  : 17 19 57.33

$\delta$  : +58 53 02.2

Center coordinates :

$\alpha$  : 17 19 57.34

$\delta$  : +58 53 02.1

Plate reference :

Origin : PanSTARRS-DR1

Color coding :

z band ●

(z+g)/2 ●

g band ●

Error:

R90 : 1.4 arsec

XMM SSC

Apr 28 08:20:01 2019