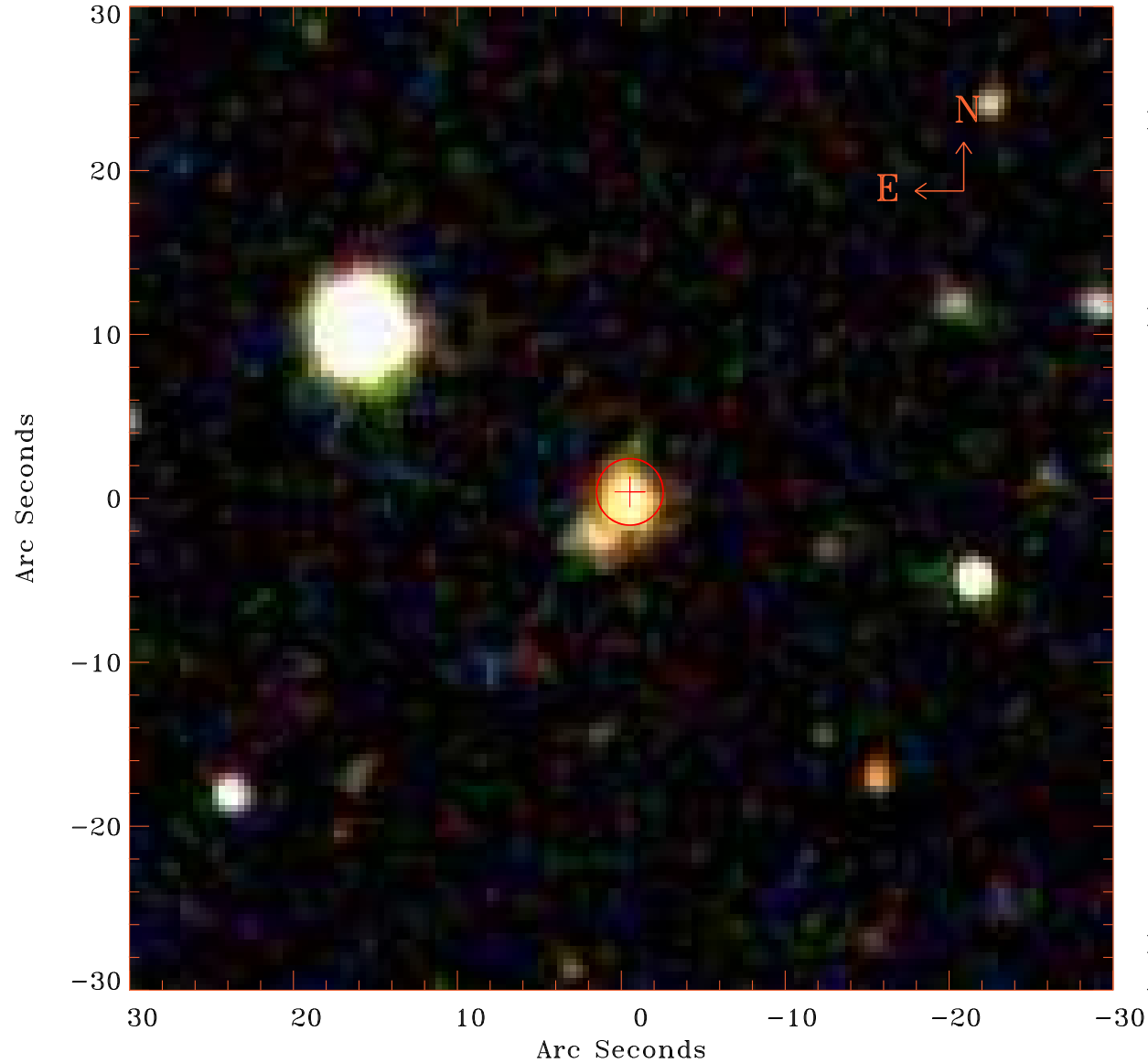


# EPIC source finding chart V10.0



Principal Investigator :

Dr Martin Hardcastle

XMM target name :

3C349

OBS ID : 501620301

Source number : 11

X-ray coordinates :

$\alpha$  : 16 59 40.24

$\delta$  : +47 06 22.8

Center coordinates :

$\alpha$  : 16 59 40.25

$\delta$  : +47 06 22.8

Plate reference :

Origin : SDSS

Color coding :

i band ●

r band ●

g band ●

Error circle :

$R_{90}$  (") : 2.0

XMM SSC

Apr 17 16:03:29 2019