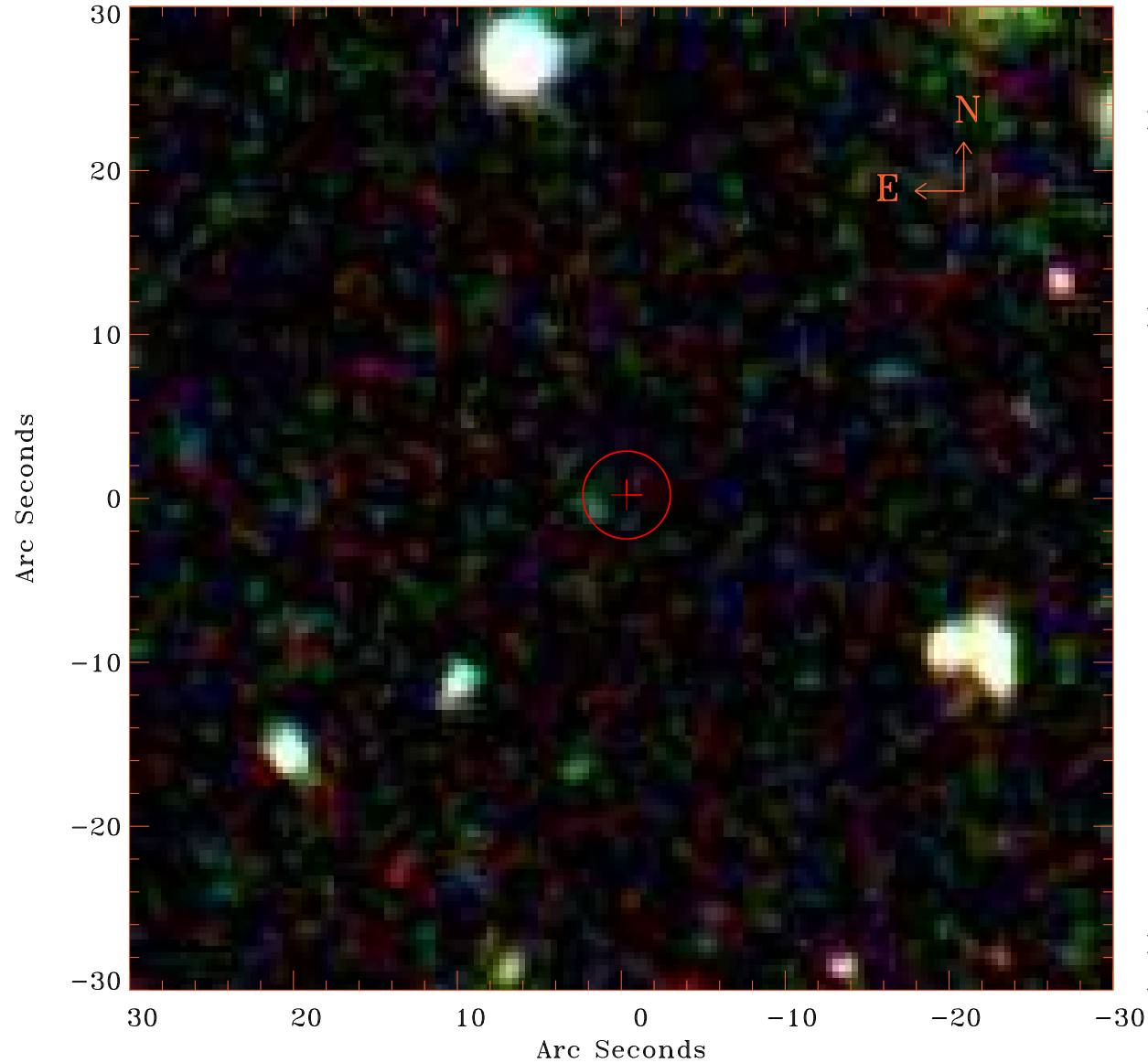


EPIC source finding chart V10.0



Principal Investigator :

Dr Martin Hardcastle

XMM target name :

3C349

OBS ID : 501620301

Source number : 16

X-ray coordinates :

α : 16 59 31.07

δ : +47 02 20.4

Center coordinates :

α : 16 59 31.06

δ : +47 02 20.6

Plate reference :

Origin : SDSS

Color coding :

i band ●

r band ●

g band ●

Error circle :

R_{90} (") : 2.7

XMM SSC

Apr 17 16:03:28 2019