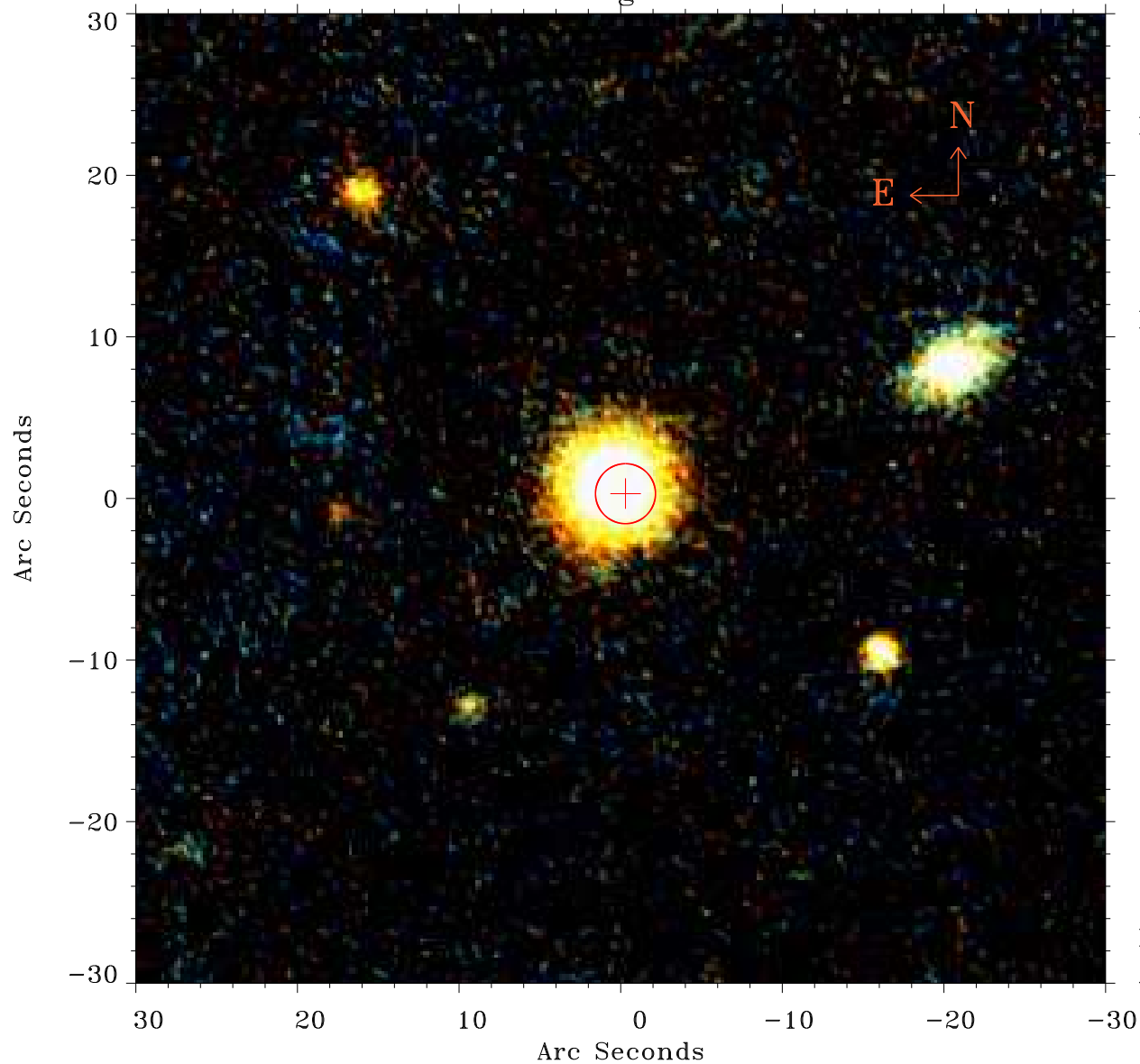


# EPIC source finding chart ACDS V10.0



Principal Investigator :

Dr Martin Hardcastle

XMM target name :

3C349

OBS ID : 501620301

Source number : 9

X-ray coordinates :

$\alpha$  : 16 59 16.71

$\delta$  : +46 58 35.3

Center coordinates :

$\alpha$  : 16 59 16.72

$\delta$  : +46 58 35.2

Plate reference :

Origin : PanSTARRS-DR1

Color coding :

z band ●

(z+g)/2 ●

g band ●

Error:

R90 : 1.8 arsec

XMM SSC

Apr 17 16:05:40 2019