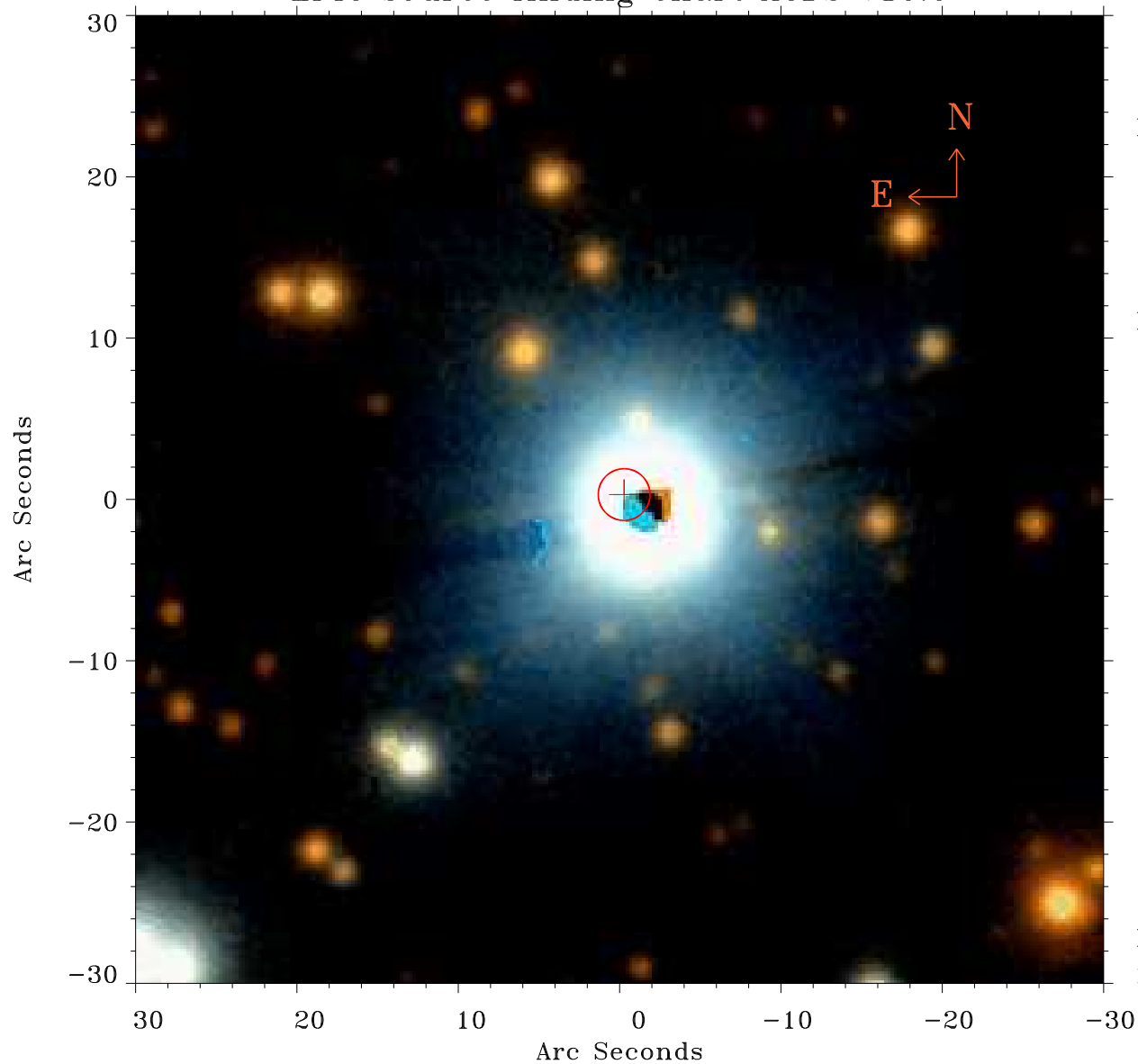


# EPIC source finding chart ACDS V10.0



Principal Investigator :

Mr Federico Bernardini

XMM target name :

XTE J1810-197

OBS ID : 605990301

Source number : 5

X-ray coordinates :

$\alpha$  : 18 10 29.50

$\delta$  : -19 49 10.0

Center coordinates :

$\alpha$  : 18 10 29.51

$\delta$  : -19 49 10.1

Plate reference :

Origin : PanSTARRS-DR1