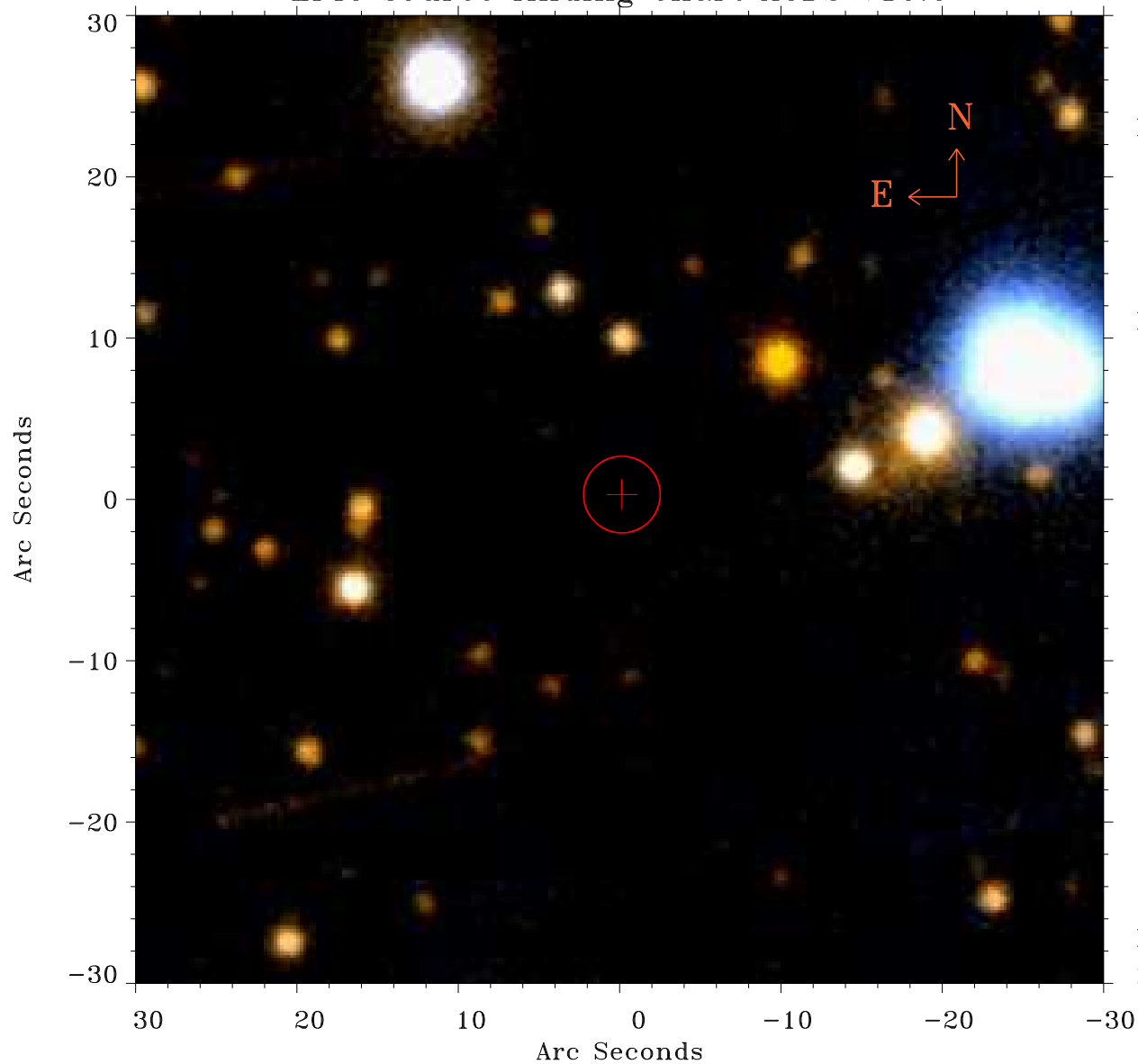


# EPIC source finding chart ACDS V10.0



Principal Investigator :

Mr Federico Bernardini

XMM target name :

XTE J1810-197

OBS ID : 605990301

Source number : 32

X-ray coordinates :

$\alpha$  : 18 10 33.44

$\delta$  : -19 49 47.0

Center coordinates :

$\alpha$  : 18 10 33.44

$\delta$  : -19 49 47.1

Plate reference :

Origin : PanSTARRS-DR1

Color coding :

z band ●

(z+g)/2 ●

g band ●

Error:

R90 : 2.4 arsec

XMM SSC

May 2 06:24:11 2019