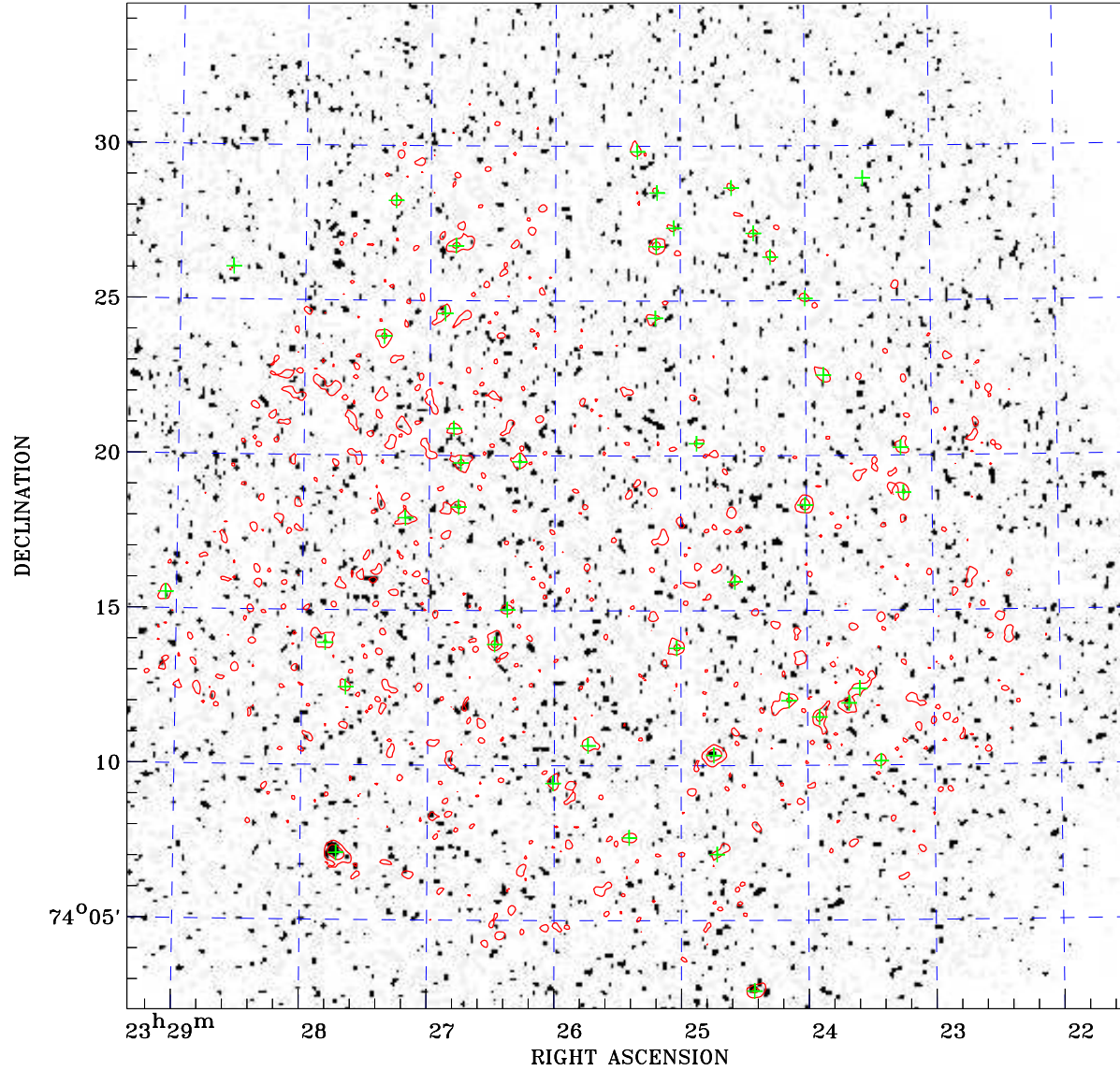


# PDF XMM ROSAT image ACDS V10.0



ROSAT image gray scale (Log) :  
[Color bar showing gray scale from dark to light]  
< 9.577E-05 > 9.591E-05  
(counts s<sup>-1</sup>)

⊙ Epic image contour  
levels at 2, 7 and 30 $\sigma$

+ Detected Epic sources

Principal Investigator :  
Prof Yohko Tsuboi

XMM target name :  
CB244

Observation ID :  
0650910301

Epic image :  
 $\alpha$  : 23 25 24.26  
 $\delta$  : +74 18 23.6  
Energy band : 0.2–12.0 keV  
MOS1 : 12584 s  
MOS2 : 12589 s  
PN : 11004 s

Contour levels (counts) :  
2 $\sigma$  :1.095E+00 7 $\sigma$  :2.489E+00  
30 $\sigma$  :8.903E+00

Nearest ROSAT image  
from Epic image center :  
Observation : 202519h  
Instrument : HRI  
 $\alpha$  : 23 26 09.14  
 $\delta$  : +74 15 47.7

Other ROSAT images :  
None

XMM SSC  
Apr 30 15:31:38 2019