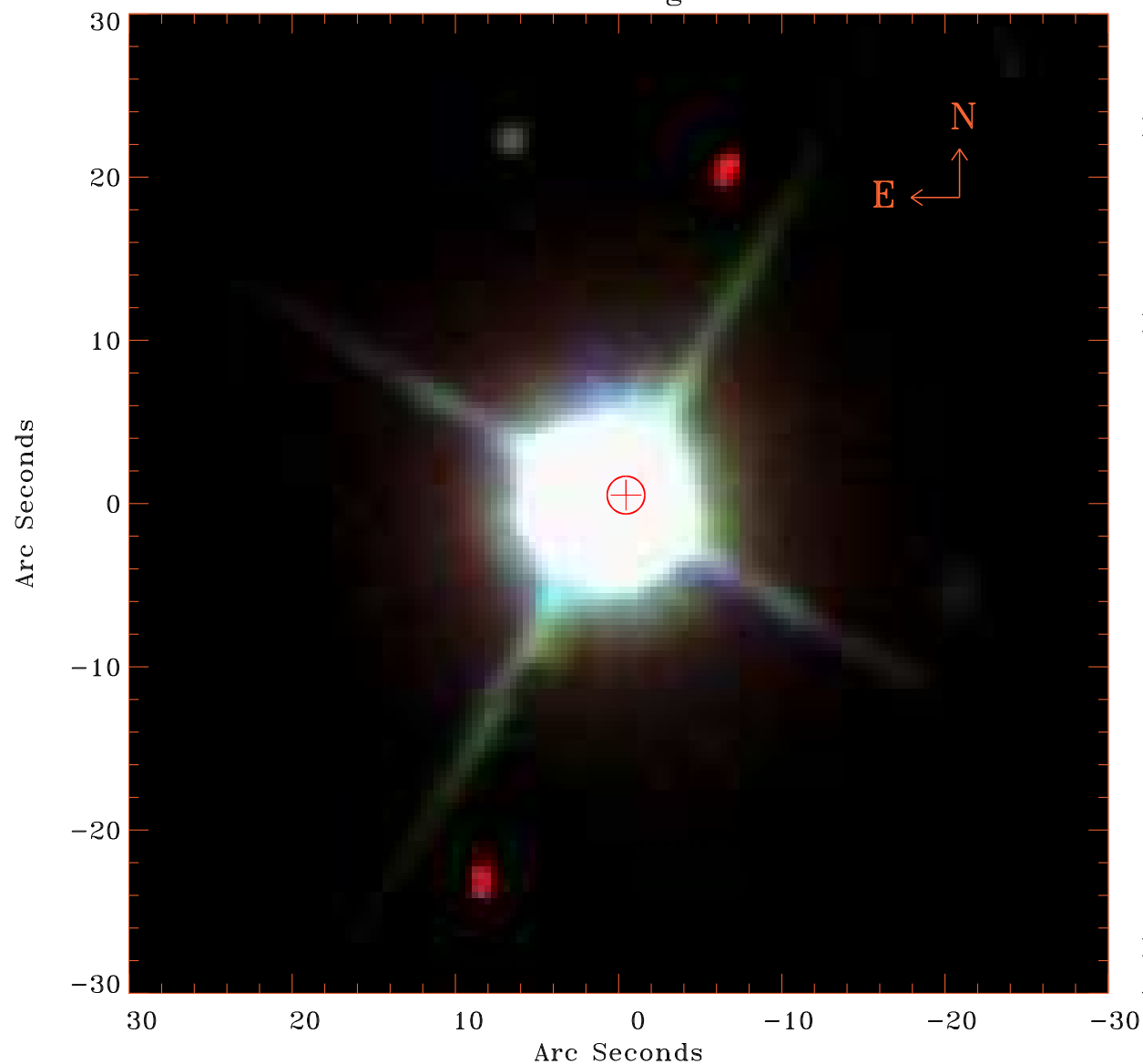


# EPIC source finding chart V10.0



Principal Investigator :  
Dr Ioannis Georgantopoulos

XMM target name :  
FLS530

OBS ID : 651372901  
Source number : 5

X-ray coordinates :  
 $\alpha$  : 17 13 16.27  
 $\delta$  : +58 40 05.7

Center coordinates :  
 $\alpha$  : 17 13 16.28  
 $\delta$  : +58 40 05.6

Plate reference :  
Origin : SDSS

Color coding :  
i band ●  
r band ●  
g band ●

Error circle :  
 $R_{90}$  (") : 1.1

XMM SSC  
Apr 21 05:57:31 2019