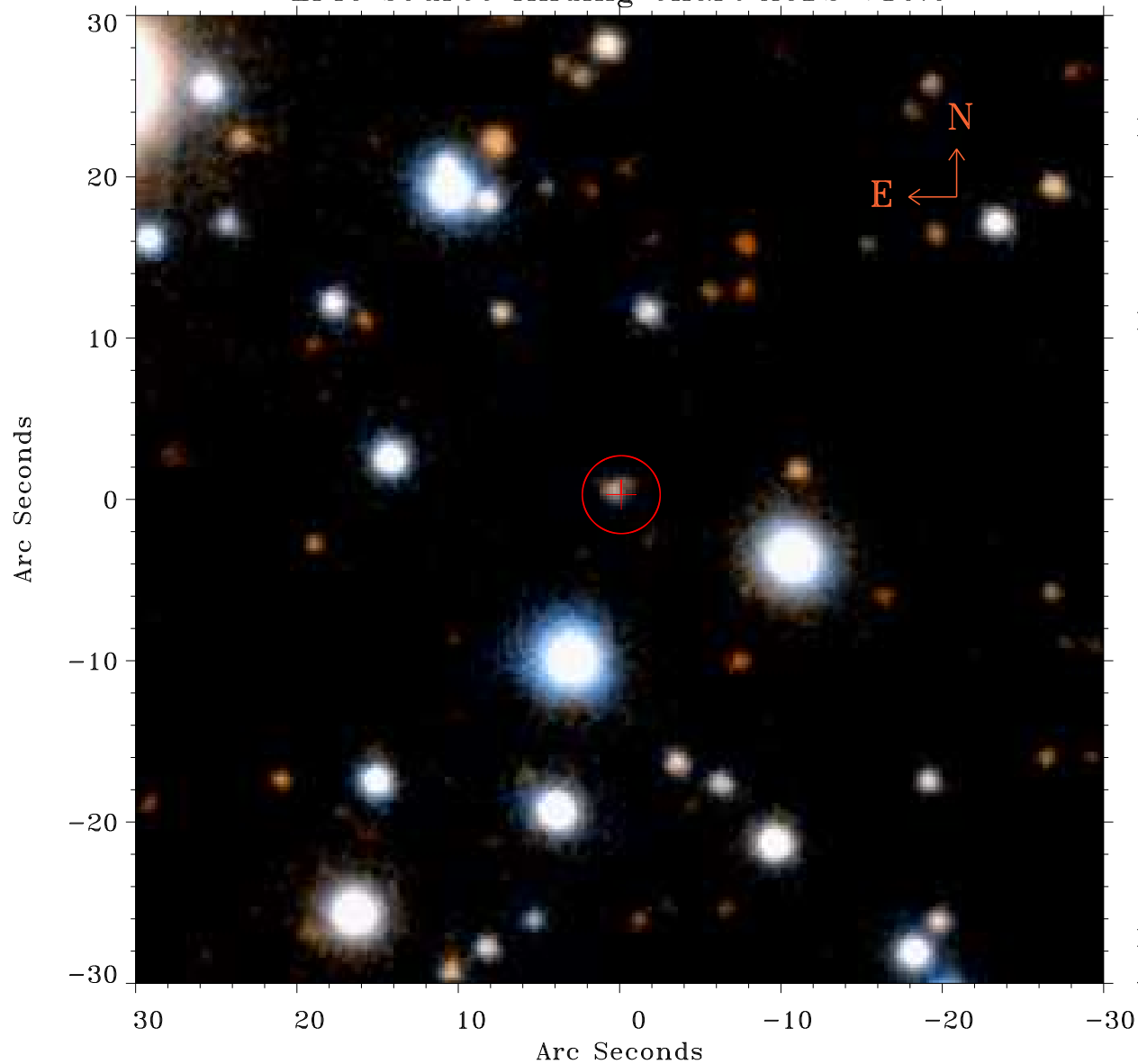


# EPIC source finding chart ACDS V10.0



Principal Investigator :

Dr Fabio Favata

XMM target name :

61 Cyg

OBS ID : 654550601

Source number : 18

X-ray coordinates :

$\alpha$  : 21 05 49.33

$\delta$  : +38 39 45.9

Center coordinates :

$\alpha$  : 21 05 49.32

$\delta$  : +38 39 45.8

Plate reference :

Origin : PanSTARRS-DR1

Color coding :

z band ●

(z+g)/2 ●

g band ●

Error:

R90 : 2.4 arsec

XMM SSC

Apr 29 11:09:26 2019