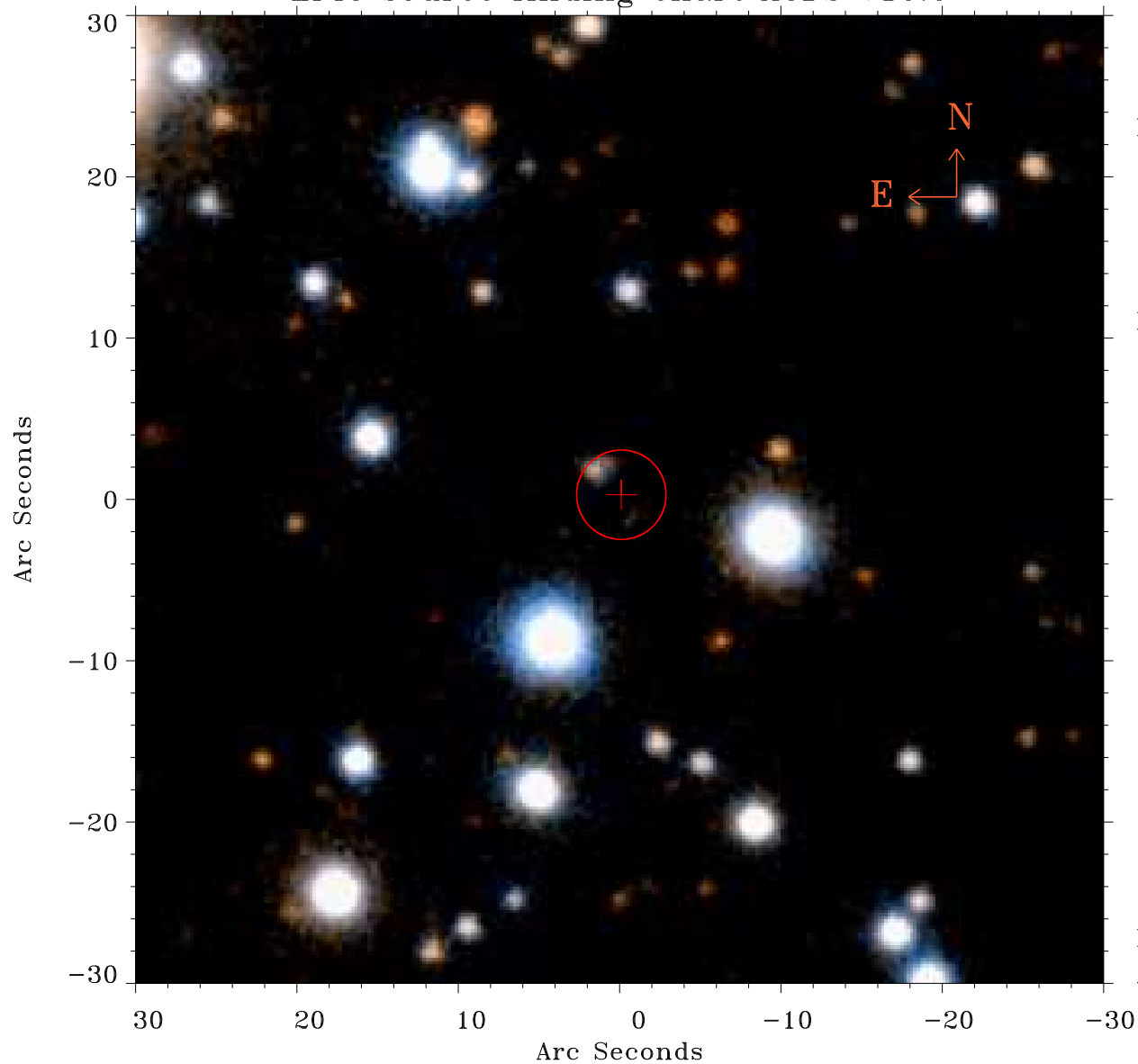


# EPIC source finding chart ACDS V10.0



Principal Investigator :

Dr Fabio Favata

XMM target name :

61 Cyg

OBS ID : 654550701

Source number : 19

X-ray coordinates :

$\alpha$  : 21 05 49.23

$\delta$  : +38 39 44.7

Center coordinates :

$\alpha$  : 21 05 49.22

$\delta$  : +38 39 44.6

Plate reference :

Origin : PanSTARRS-DR1

Color coding :

z band ●

(z+g)/2 ●

g band ●

Error:

R90 : 2.8 arsec

XMM SSC

Apr 17 12:44:38 2019