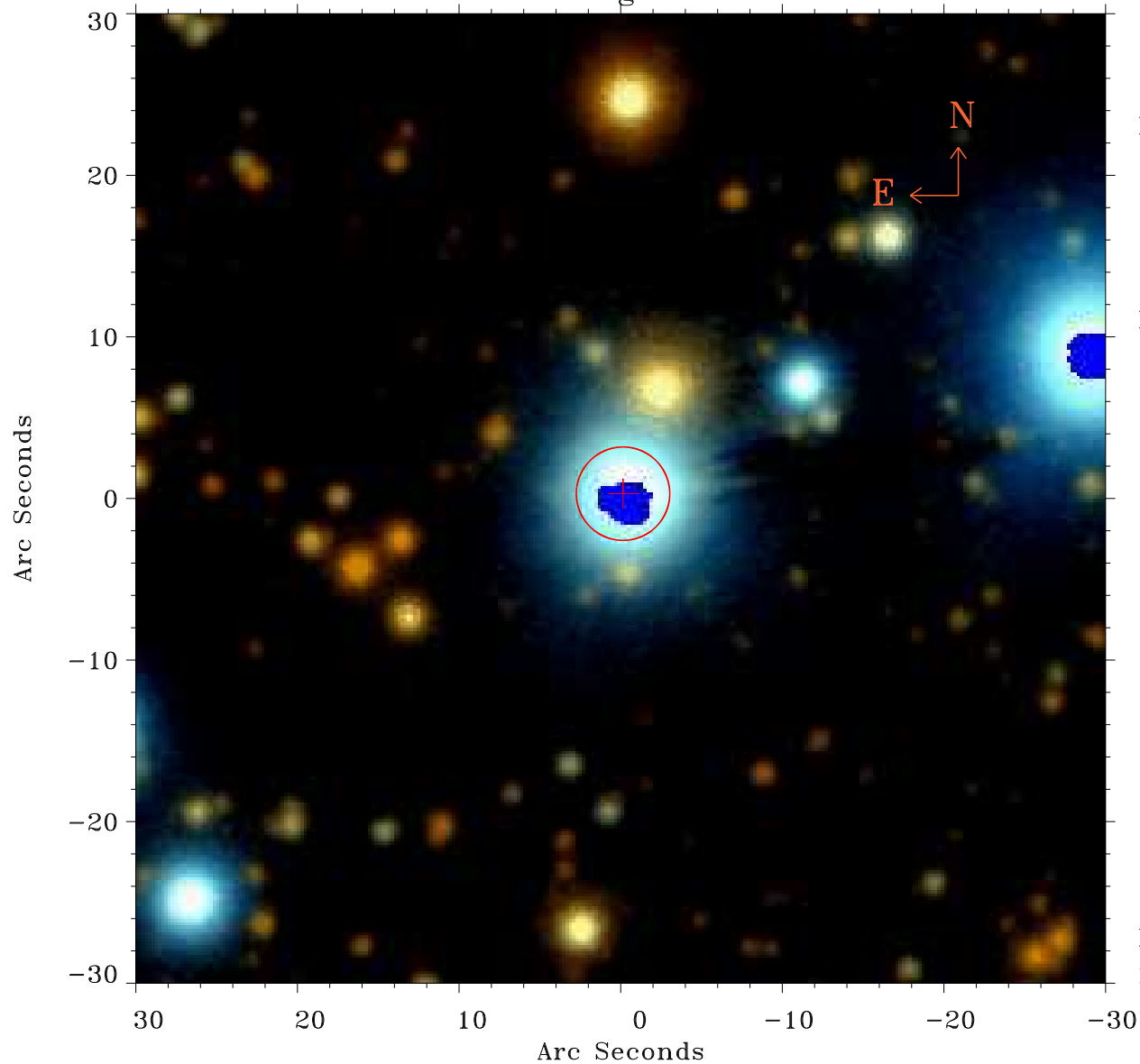


# EPIC source finding chart ACDS V10.0



Principal Investigator :

Dr Nanda Rea

XMM target name :

SWIFTJ1822.3-1606

OBS ID : 672281801

Source number : 15

X-ray coordinates :

$\alpha$  : 18 22 10.77

$\delta$  : -16 10 31.6

Center coordinates :

$\alpha$  : 18 22 10.76

$\delta$  : -16 10 31.7

Plate reference :

Origin : PanSTARRS-DR1

Color coding :

z band ●

(z+g)/2 ●

g band ●

Error:

R90 : 2.9 arsec

XMM SSC

May 2 21:28:47 2019