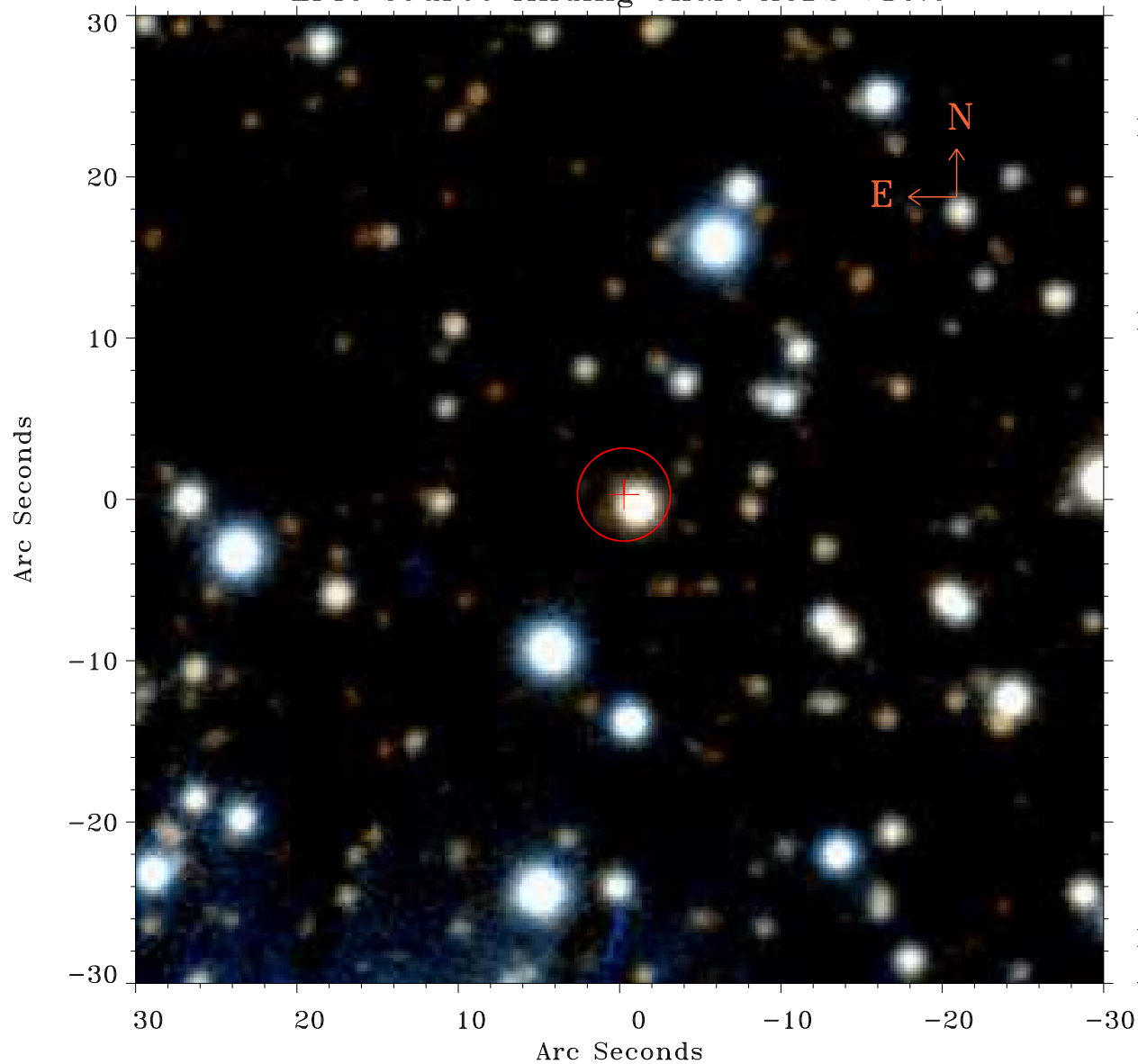


EPIC source finding chart ACDS V10.0



Principal Investigator :
Prof Douglas Finkbeiner

XMM target name :
Fermi Bubble 2

OBS ID : 672400131
Source number : 6

X-ray coordinates :
 α : 17 48 03.29
 δ : -13 35 47.0

Center coordinates :
 α : 17 48 03.29
 δ : -13 35 47.1

Plate reference :
Origin : PanSTARRS-DR1

Color coding :
z band ●
(z+g)/2 ●
g band ●

Error:
R90 : 2.9 arsec

XMM SSC
Apr 30 06:03:05 2019