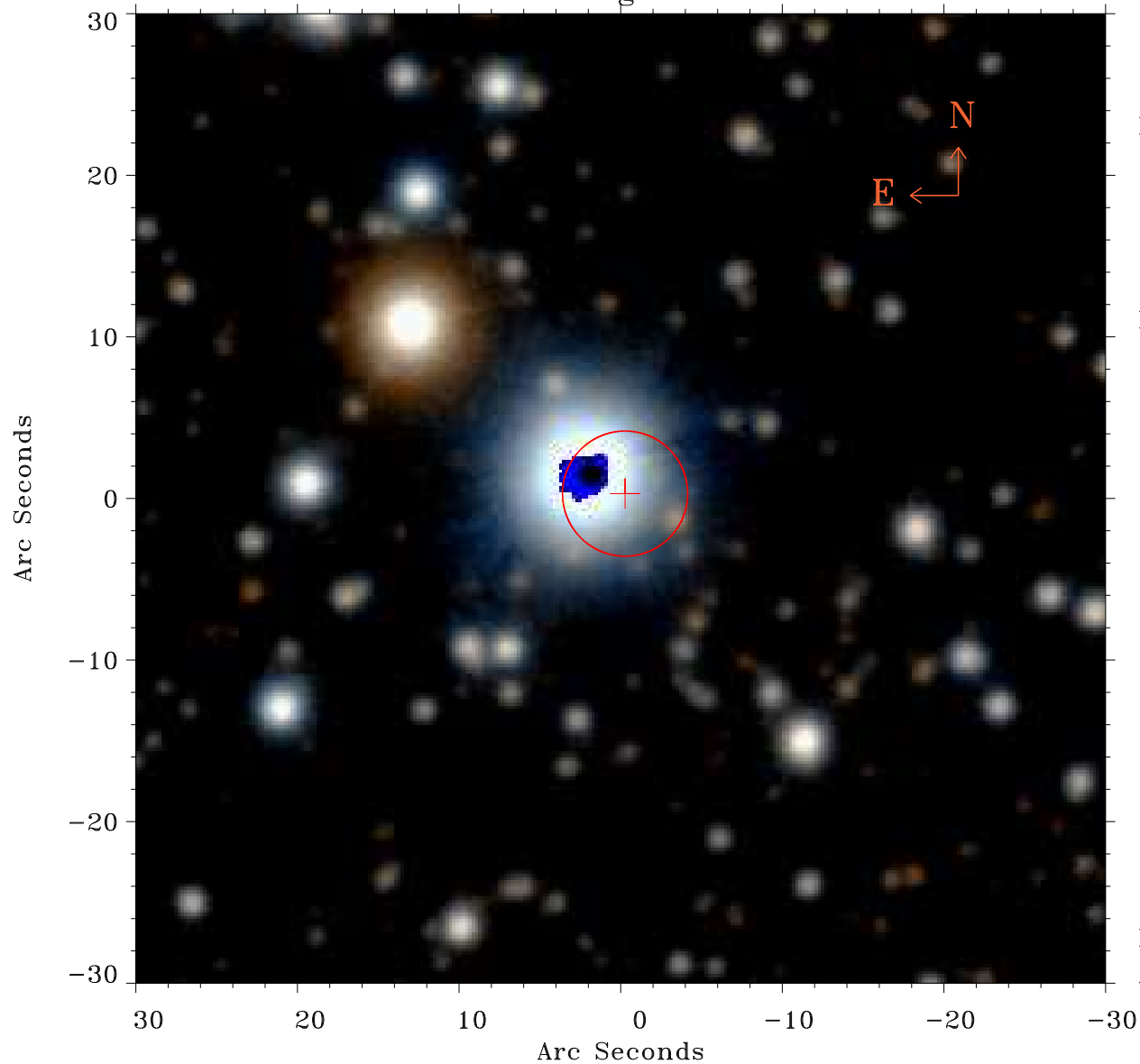


# EPIC source finding chart ACDS V10.0



Principal Investigator :  
Prof Douglas Finkbeiner

XMM target name :  
Fermi Bubble 2

OBS ID : 672400131  
Source number : 7

X-ray coordinates :  
 $\alpha$  : 17 47 33.41  
 $\delta$  : -13 37 46.3

Center coordinates :  
 $\alpha$  : 17 47 33.41  
 $\delta$  : -13 37 46.4

Plate reference :  
Origin : PanSTARRS-DR1

Color coding :  
z band ●  
(z+g)/2 ●  
g band ●

Error:  
R90 : 3.9 arsec

XMM SSC  
Apr 30 06:02:34 2019