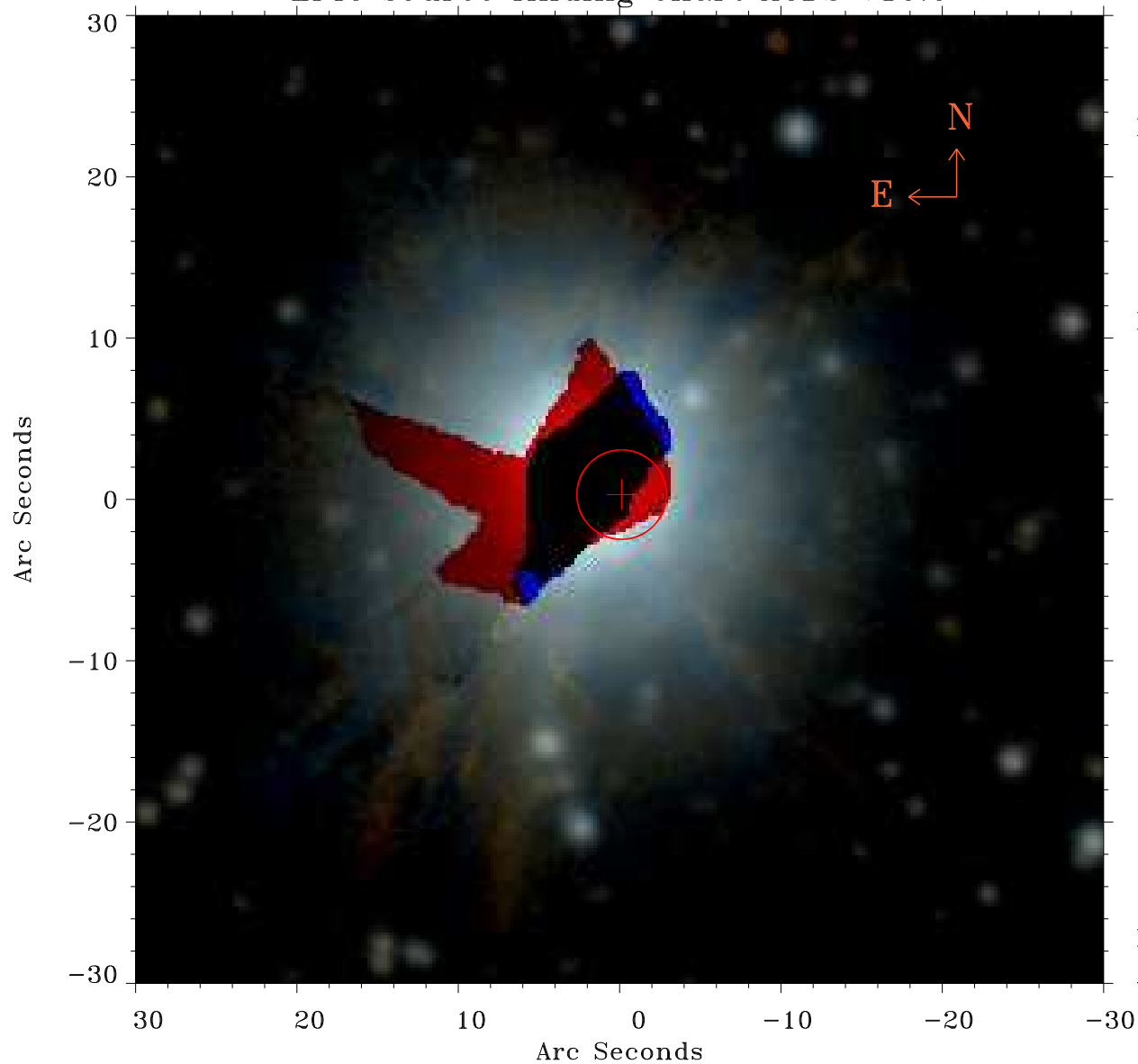


EPIC source finding chart ACDS V10.0



Principal Investigator :
Prof Douglas Finkbeiner

XMM target name :
Fermi Bubble 2

OBS ID : 672400131
Source number : 2

X-ray coordinates :
 α : 17 47 34.78
 δ : -13 45 29.8

Center coordinates :
 α : 17 47 34.77
 δ : -13 45 29.9

Plate reference :
Origin : PanSTARRS-DR1

Color coding :
z band ●
(z+g)/2 ●
g band ●

Error:
R90 : 2.8 arsec

XMM SSC
Apr 30 06:02:44 2019