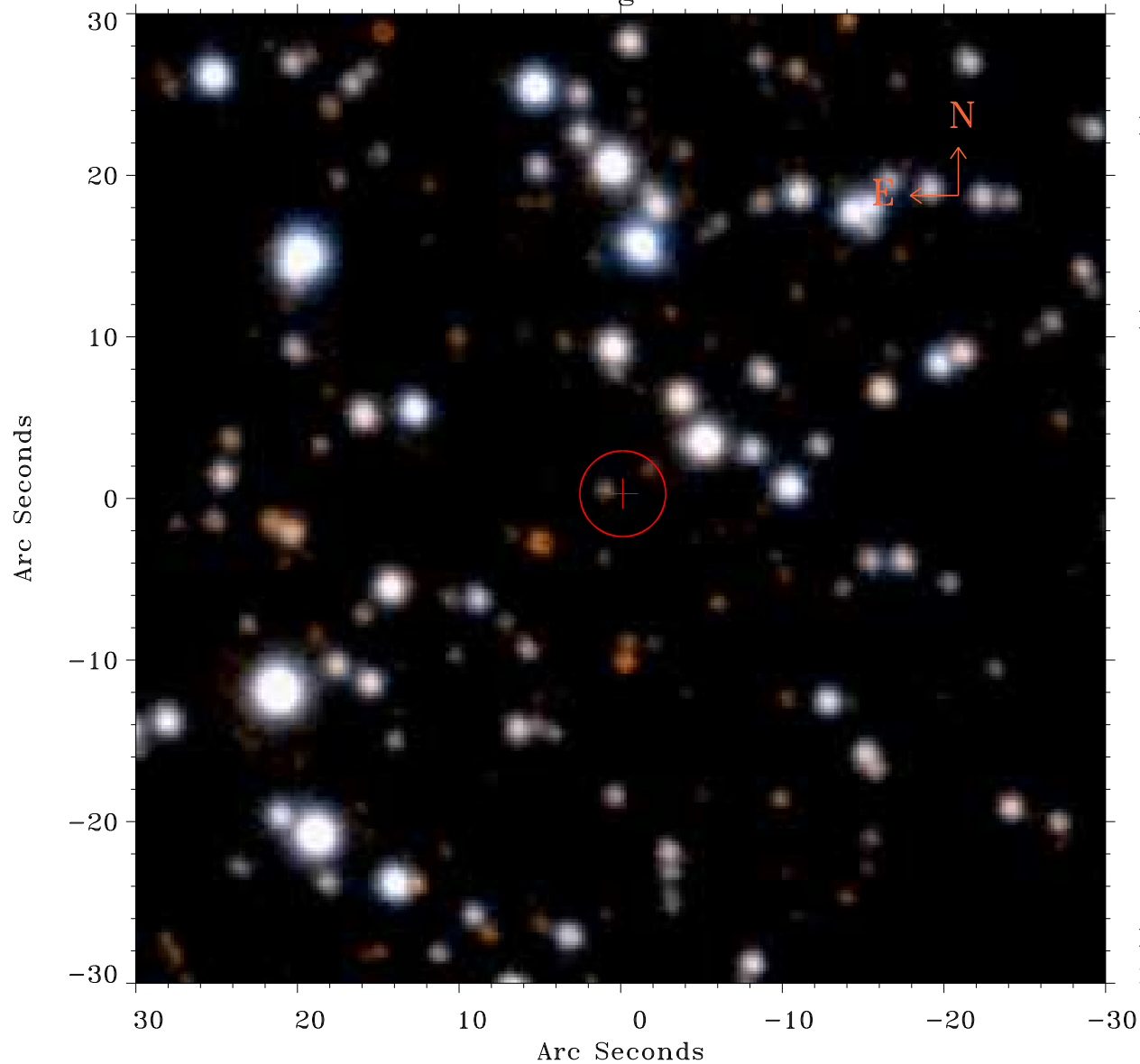


EPIC source finding chart ACDS V10.0



Principal Investigator :
Prof Douglas Finkbeiner

XMM target name :
Fermi Bubble 2

OBS ID : 672400134
Source number : 2

X-ray coordinates :
 α : 17 48 14.74
 δ : -12 54 27.2

Center coordinates :
 α : 17 48 14.74
 δ : -12 54 27.3

Plate reference :
Origin : PanSTARRS-DR1

Color coding :
z band ●
(z+g)/2 ●
g band ●

Error:
R90 : 2.6 arsec

XMM SSC
May 2 11:25:00 2019