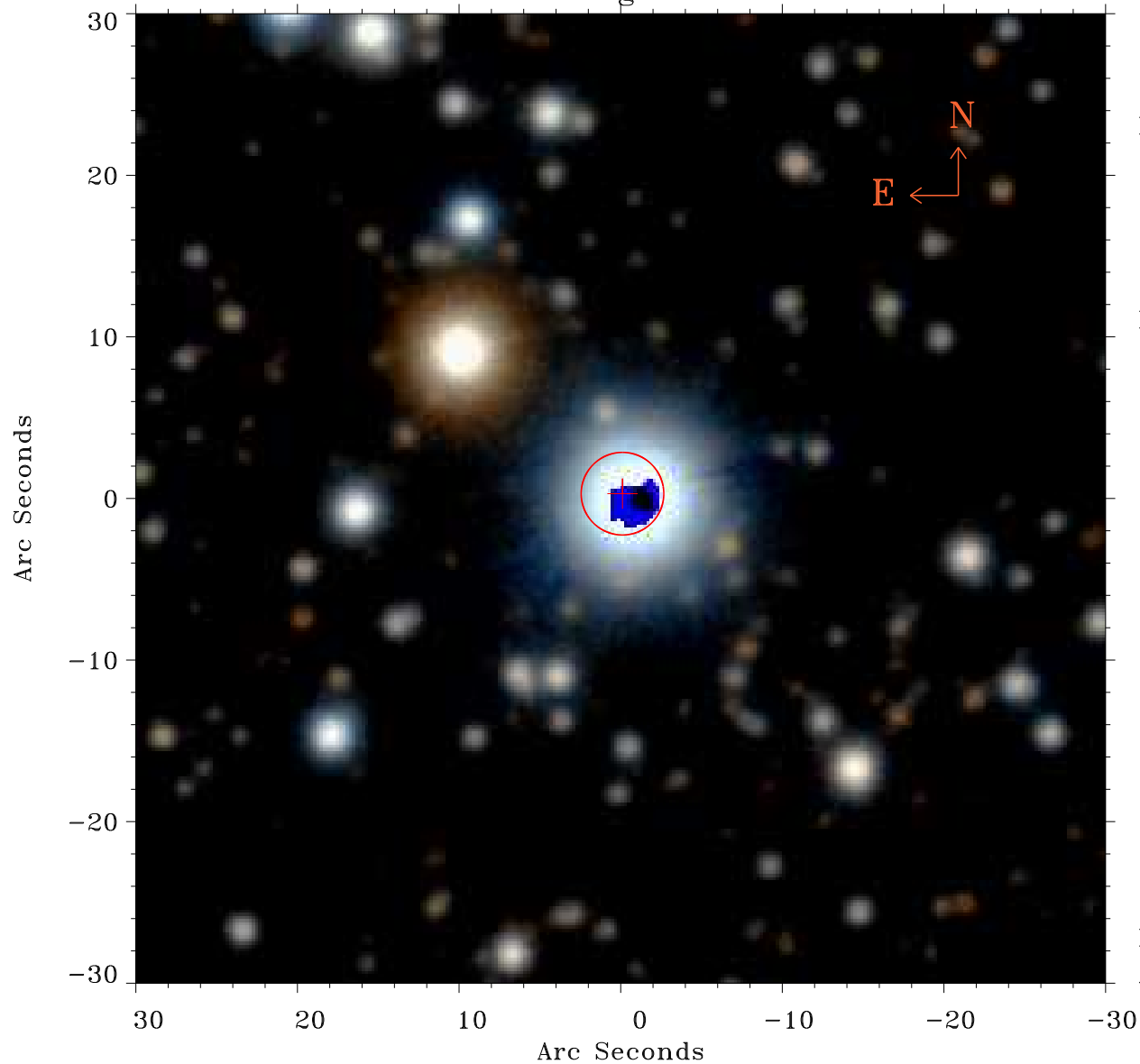


EPIC source finding chart ACDS V10.0



Principal Investigator :
Prof Douglas Finkbeiner

XMM target name :
Fermi Bubble 2

OBS ID : 672400138
Source number : 5

X-ray coordinates :
 α : 17 47 33.63
 δ : -13 37 44.6

Center coordinates :
 α : 17 47 33.63
 δ : -13 37 44.7

Plate reference :
Origin : PanSTARRS-DR1

Color coding :
z band ●
(z+g)/2 ●
g band ●

Error:
R90 : 2.5 arsec

XMM SSC
Apr 21 08:14:28 2019