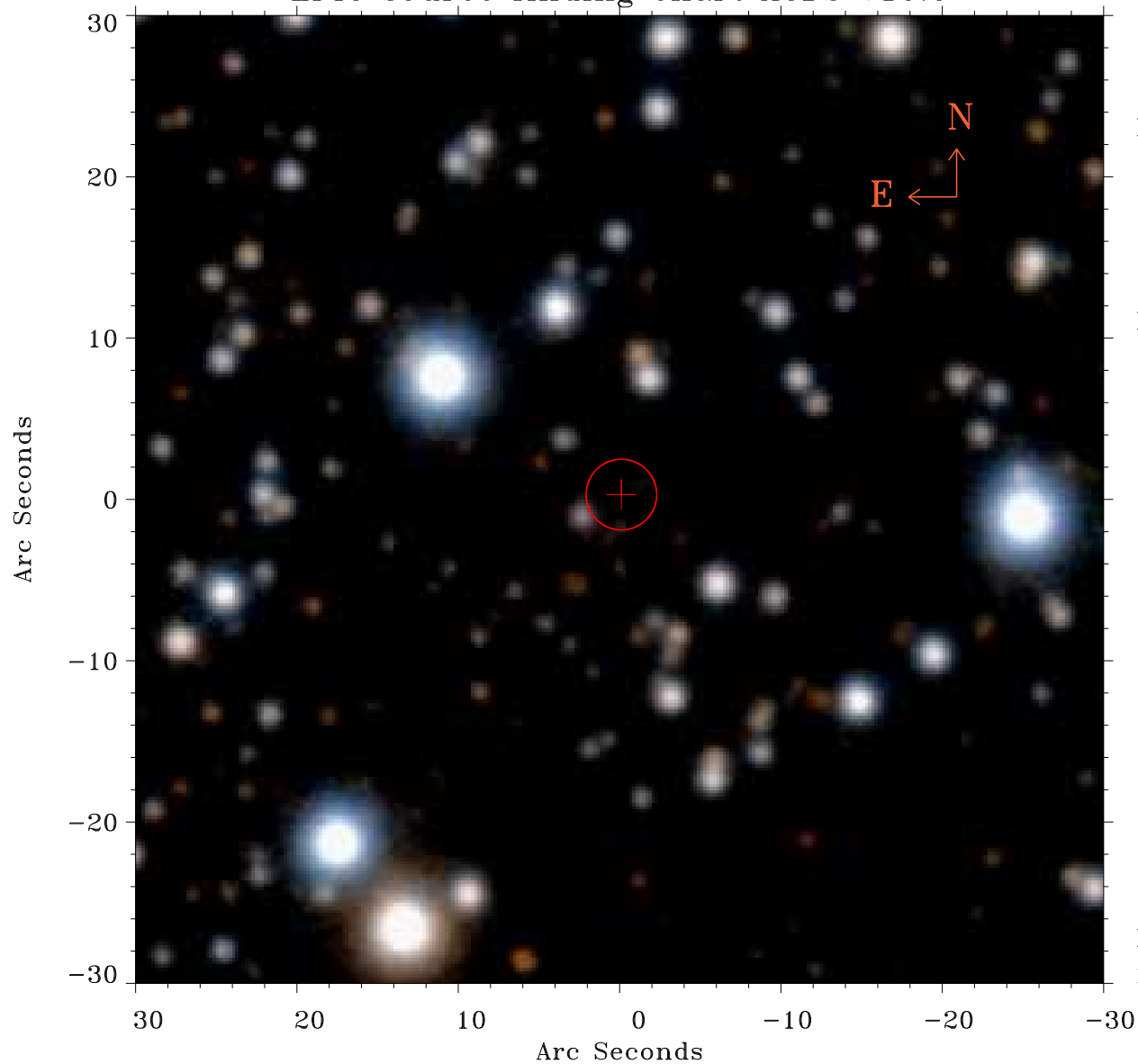


# EPIC source finding chart ACDS V10.0



Principal Investigator :  
Prof Douglas Finkbeiner

XMM target name :  
Fermi Bubble 2

OBS ID : 672400140  
Source number : 1

X-ray coordinates :  
 $\alpha$  : 17 48 32.54  
 $\delta$  : -13 06 55.5

Center coordinates :  
 $\alpha$  : 17 48 32.54  
 $\delta$  : -13 06 55.6

Plate reference :  
Origin : PanSTARRS-DR1

Color coding :  
z band ●  
(z+g)/2 ●  
g band ●

Error:  
R90 : 2.2 arsec

XMM SSC  
May 2 09:24:43 2019