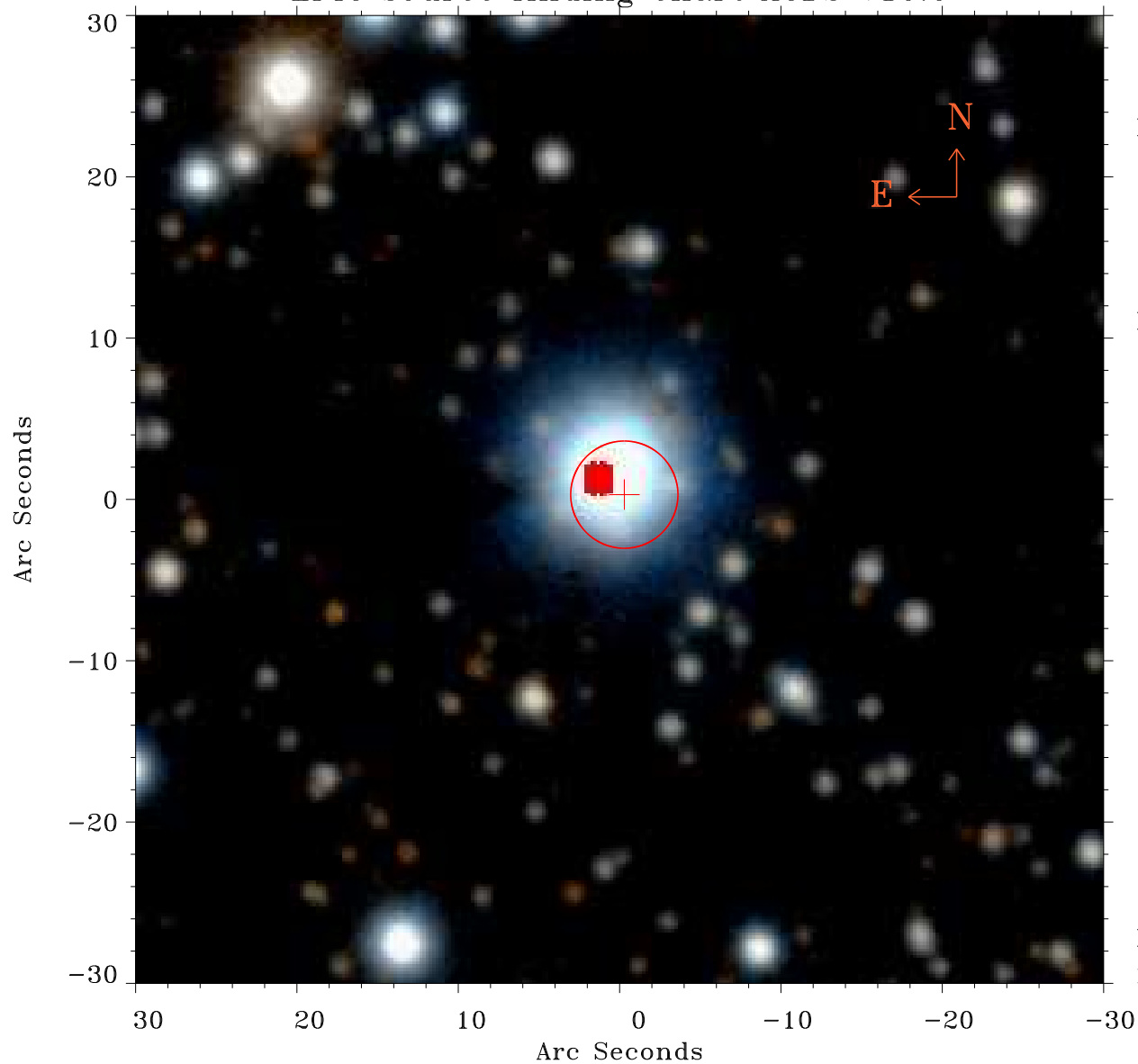


EPIC source finding chart ACDS V10.0



Principal Investigator :
Prof Douglas Finkbeiner

XMM target name :
Fermi Bubble 2

OBS ID : 672400140
Source number : 13

X-ray coordinates :
 α : 17 48 06.22
 δ : -13 05 00.1

Center coordinates :
 α : 17 48 06.22
 δ : -13 05 00.2

Plate reference :
Origin : PanSTARRS-DR1

Color coding :
z band ●
(z+g)/2 ●
g band ●

Error:
R90 : 3.3 arsec

XMM SSC
May 2 09:24:39 2019