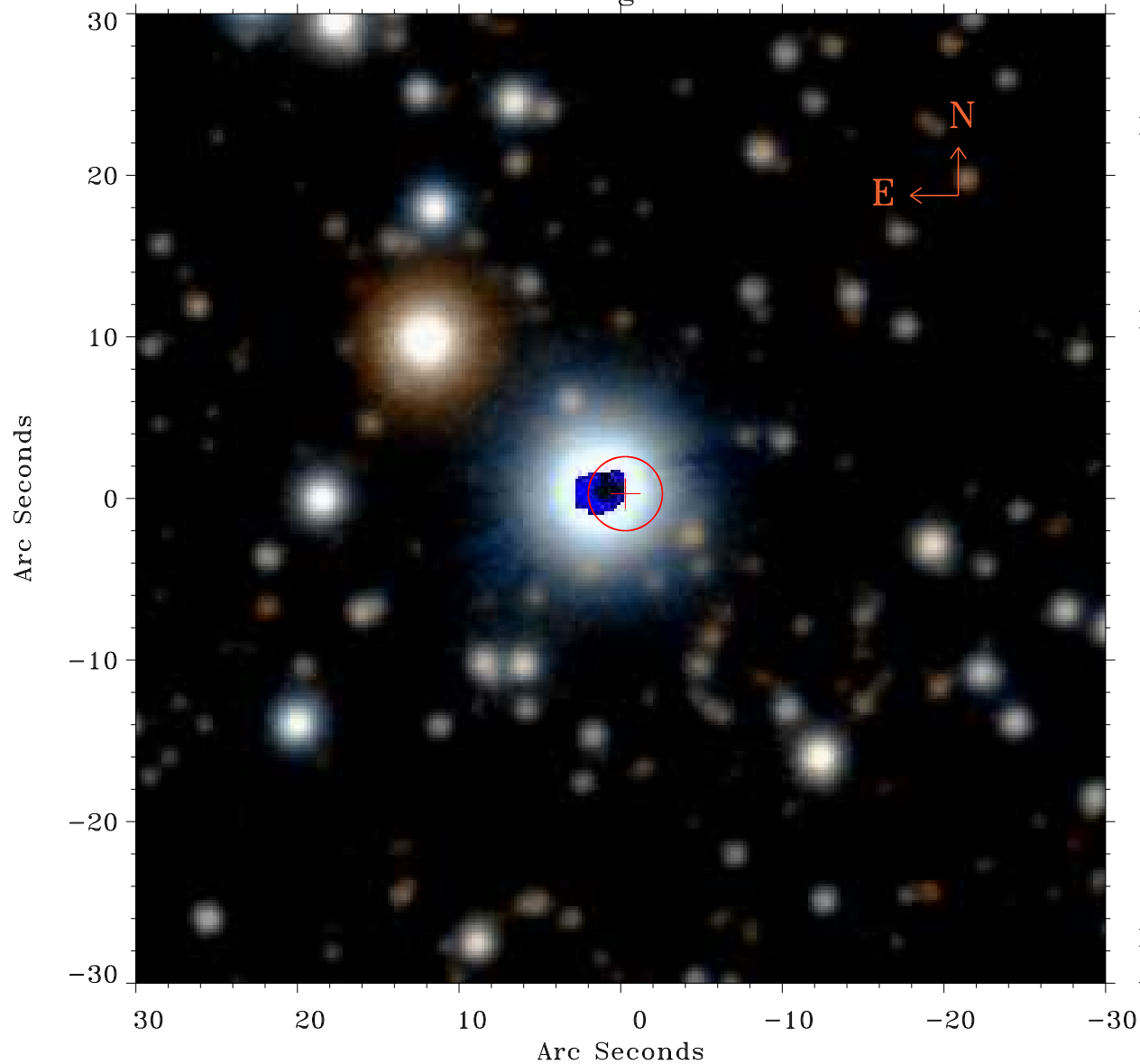


# EPIC source finding chart ACDS V10.0



Principal Investigator :  
Prof Douglas Finkbeiner

XMM target name :  
Fermi Bubble 2

OBS ID : 672400142  
Source number : 2

X-ray coordinates :  
 $\alpha$  : 17 47 33.47  
 $\delta$  : -13 37 45.4

Center coordinates :  
 $\alpha$  : 17 47 33.48  
 $\delta$  : -13 37 45.4

Plate reference :  
Origin : PanSTARRS-DR1

Color coding :  
z band ●  
(z+g)/2 ●  
g band ●

Error:  
R90 : 2.3 arsec

XMM SSC  
Apr 26 19:27:26 2019