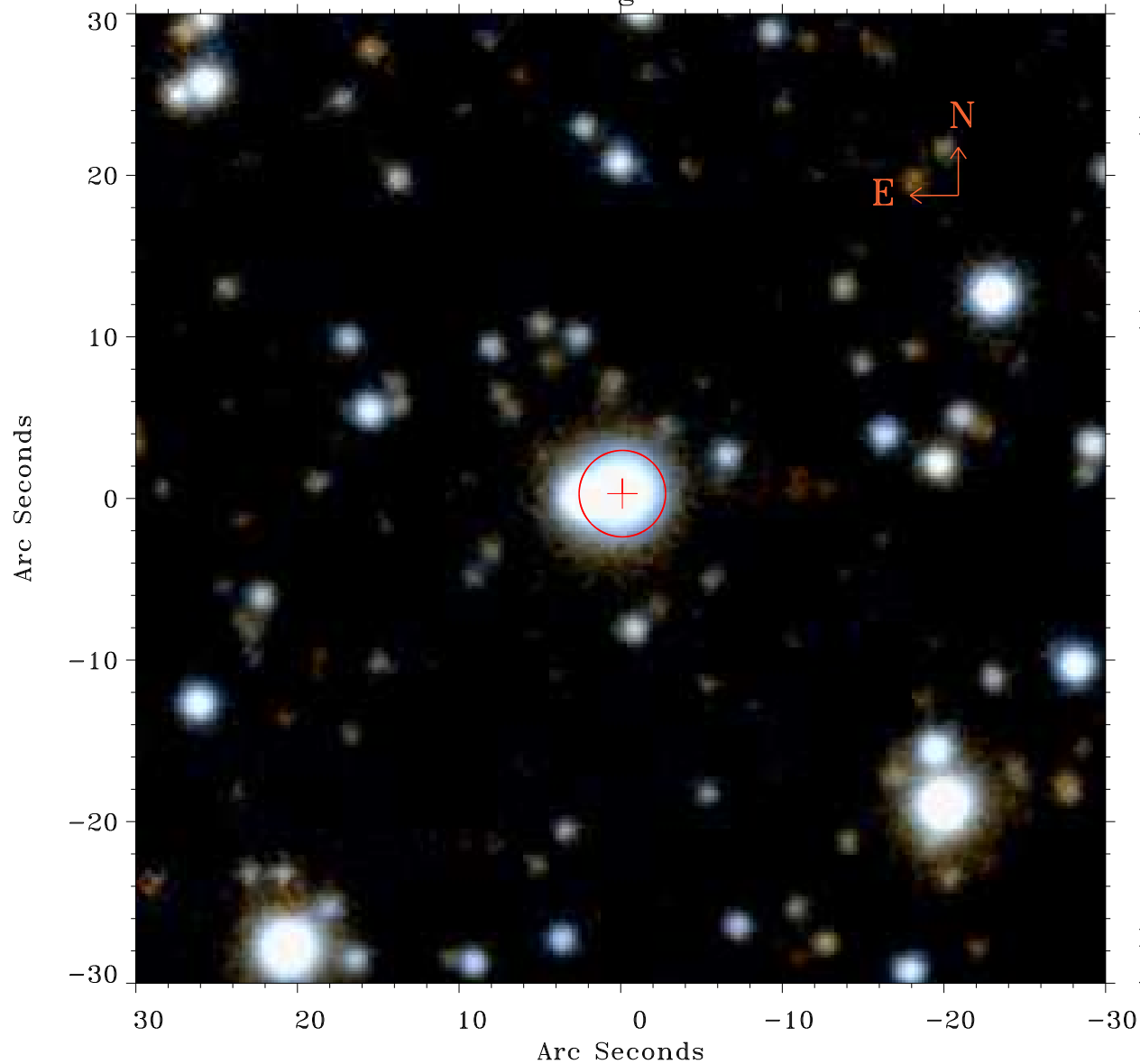


# EPIC source finding chart ACDS V10.0



Principal Investigator :  
Prof Douglas Finkbeiner

XMM target name :  
Fermi Bubble 1

OBS ID : 672401340  
Source number : 4

X-ray coordinates :  
 $\alpha$  : 17 45 03.36  
 $\delta$  : -12 04 04.7

Center coordinates :  
 $\alpha$  : 17 45 03.36  
 $\delta$  : -12 04 04.8

Plate reference :  
Origin : PanSTARRS-DR1

Color coding :  
z band ●  
(z+g)/2 ●  
g band ●

Error:  
R90 : 2.7 arsec

XMM SSC  
Apr 25 05:04:02 2019