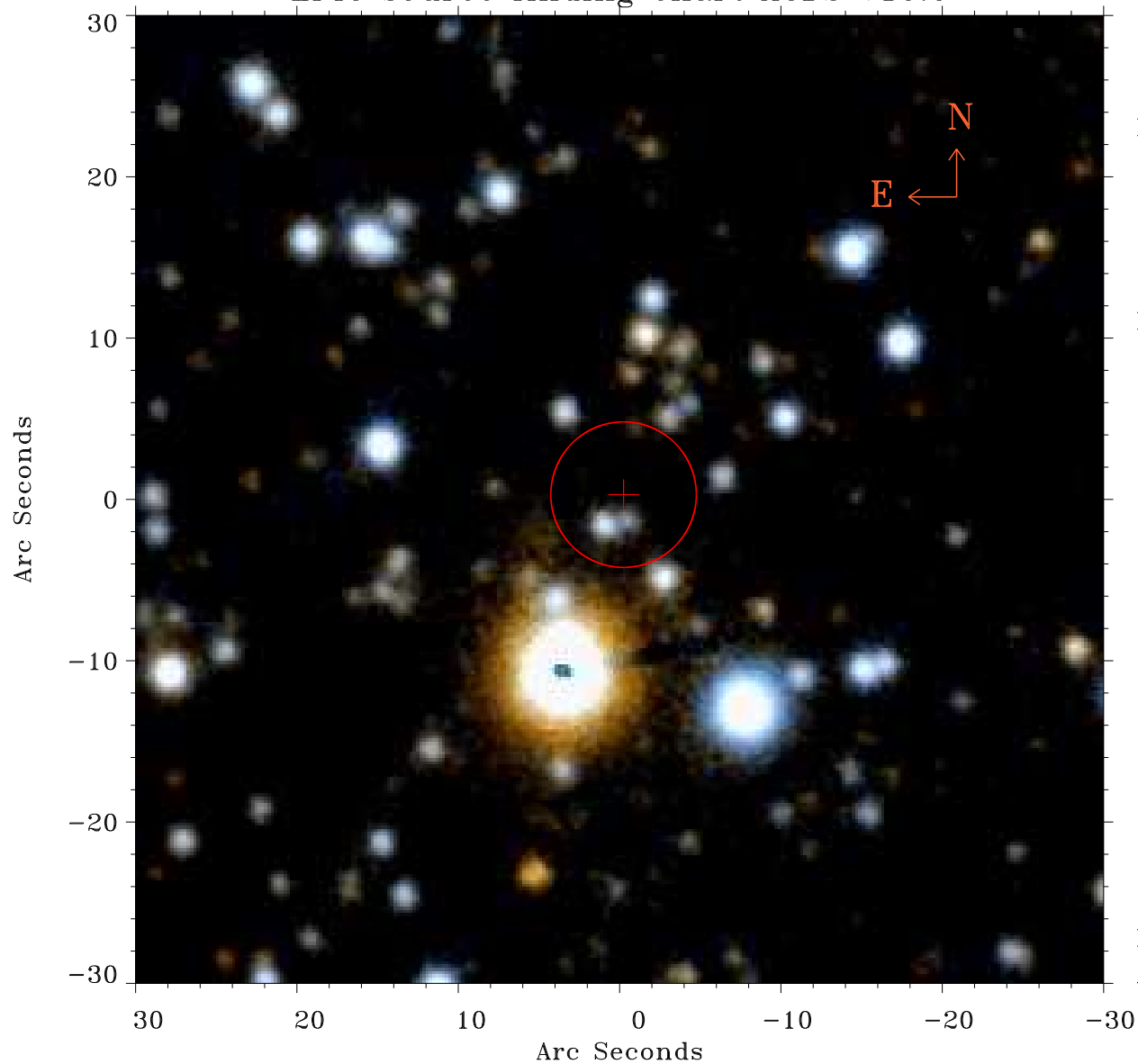


# EPIC source finding chart ACDS V10.0



Principal Investigator :  
Prof Douglas Finkbeiner

XMM target name :  
Fermi Bubble 1

OBS ID : 672401341  
Source number : 9

X-ray coordinates :  
 $\alpha$  : 17 46 28.51  
 $\delta$  : -12 09 25.2

Center coordinates :  
 $\alpha$  : 17 46 28.52  
 $\delta$  : -12 09 25.3

Plate reference :  
Origin : PanSTARRS-DR1

Color coding :  
z band ●  
(z+g)/2 ●  
g band ●

Error:  
R90 : 4.5 arsec

XMM SSC  
Apr 24 02:06:15 2019