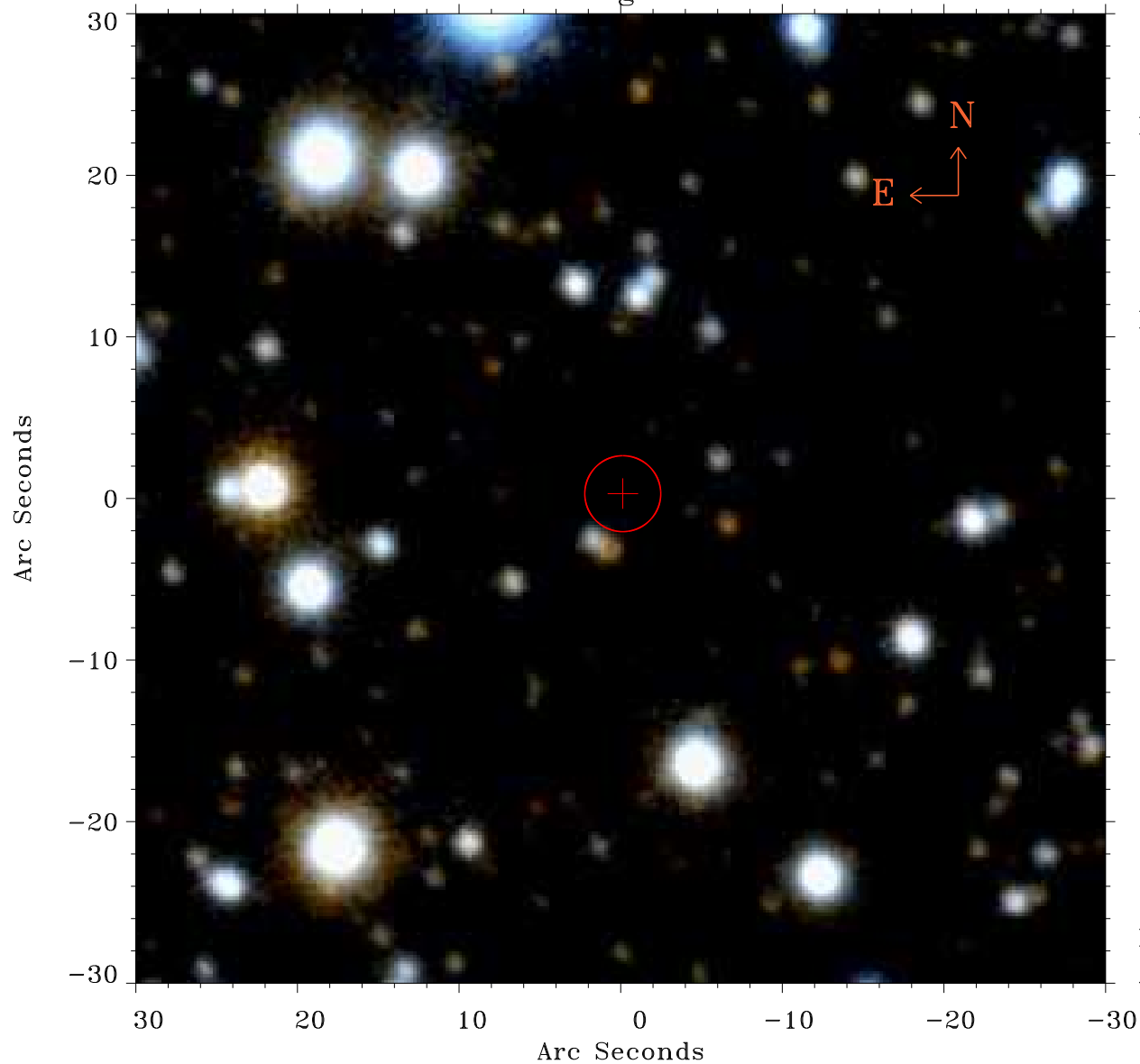


# EPIC source finding chart ACDS V10.0



Principal Investigator :  
Prof Douglas Finkbeiner

XMM target name :  
Fermi Bubble 1

OBS ID : 672401342  
Source number : 16

X-ray coordinates :  
 $\alpha$  : 17 46 41.45  
 $\delta$  : -12 30 56.8

Center coordinates :  
 $\alpha$  : 17 46 41.44  
 $\delta$  : -12 30 56.9

Plate reference :  
Origin : PanSTARRS-DR1

Color coding :  
z band ●  
(z+g)/2 ●  
g band ●

Error:  
R90 : 2.3 arsec

XMM SSC  
Apr 22 08:24:29 2019