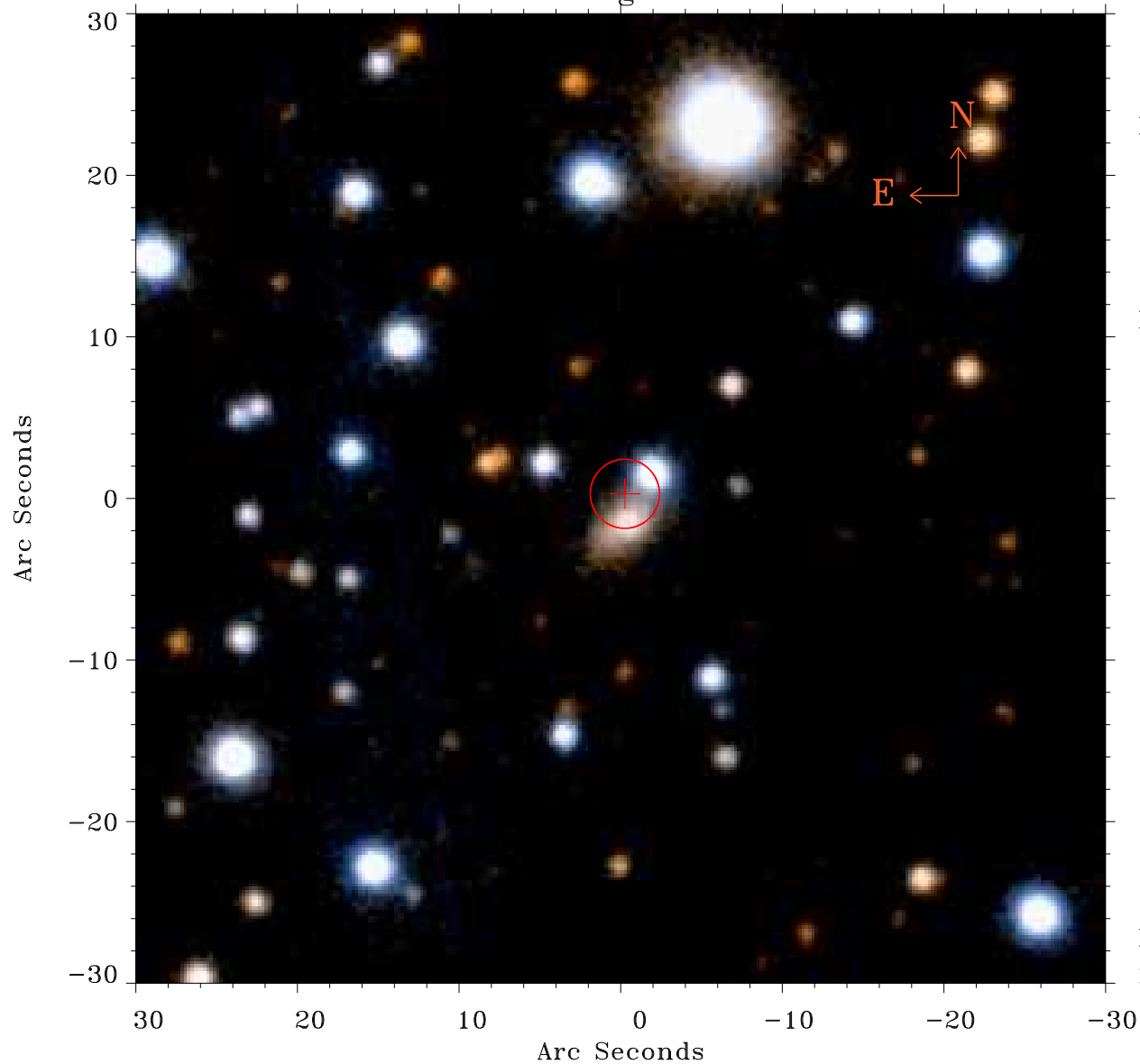


# EPIC source finding chart ACDS V10.0



Principal Investigator :

Dr Fabio Favata

XMM target name :

61 Cyg

OBS ID : 690800801

Source number : 18

X-ray coordinates :

$\alpha$  : 21 07 24.01

$\delta$  : +38 45 30.7

Center coordinates :

$\alpha$  : 21 07 24.01

$\delta$  : +38 45 30.6

Plate reference :

Origin : PanSTARRS-DR1