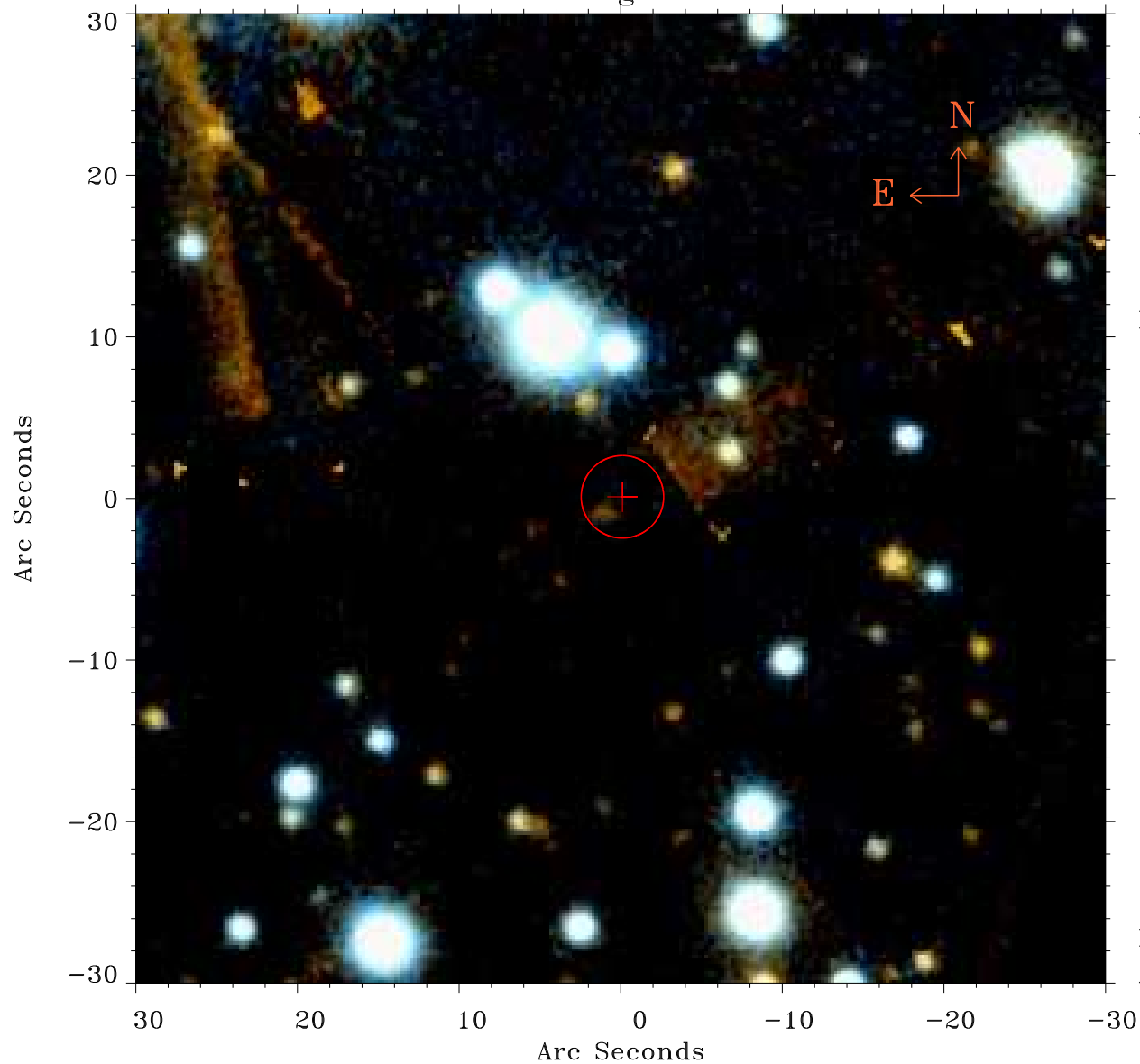


# EPIC source finding chart ACDS V10.0



Principal Investigator :

Dr Fabio Favata

XMM target name :

61 Cyg

OBS ID : 690800901

Source number : 31

X-ray coordinates :

$\alpha$  : 21 06 54.27

$\delta$  : +38 43 15.7

Center coordinates :

$\alpha$  : 21 06 54.26

$\delta$  : +38 43 15.8

Plate reference :

Origin : PanSTARRS-DR1

Color coding :

z band ●

(z+g)/2 ●

g band ●

Error:

R90 : 2.5 arsec

XMM SSC

Apr 23 00:59:22 2019