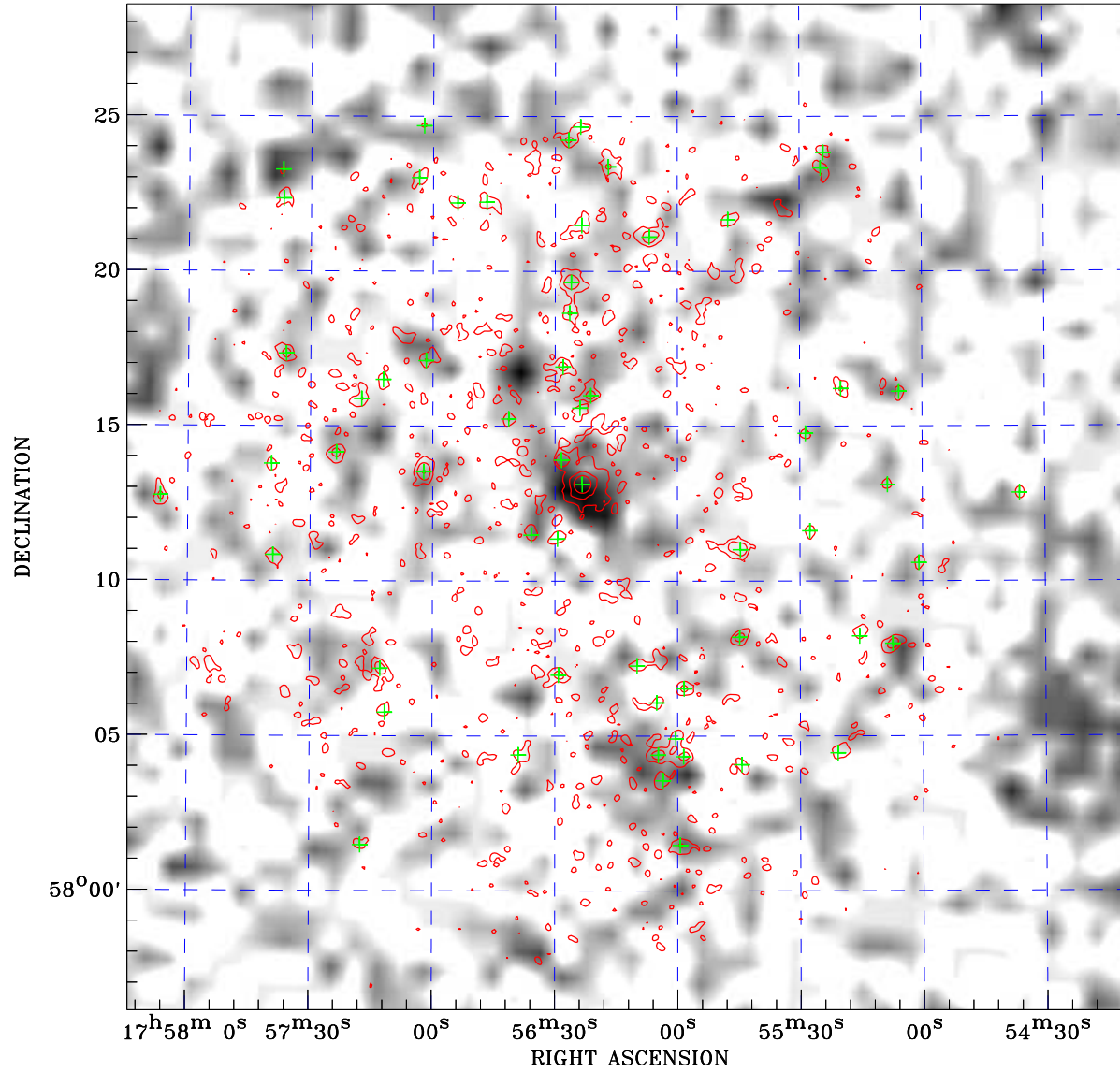



PDF XMM RASS image ACDS V10.0



RASS image gray scale (Log) :

 < 5.979E-04 > 3.007E-03
 (counts s⁻¹)

⊙ Epic image contour
 levels at 2, 7 and 30 σ

+ Detected Epic sources

Principal Investigator :
 Dr Sofia Ramstedt

XMM target name :
 T Dra

Observation ID :
 0693800101

Epic image :
 α : 17 56 11.66
 δ : +58 12 24.2
 Energy band : 0.2–12.0 keV
 MOS1 : 12196 s
 MOS2 : 12199 s
 PN : 10611 s

Contour levels (counts) :
 2 σ :8.577E-01 7 σ :2.020E+00
 30 σ :7.366E+00

RASS image :
 Observation : 930730p
 Instrument : PSPCC
 α : 18 10 18.47
 δ : +56 05 58.2

XMM SSC
 Apr 22 19:32:39 2019