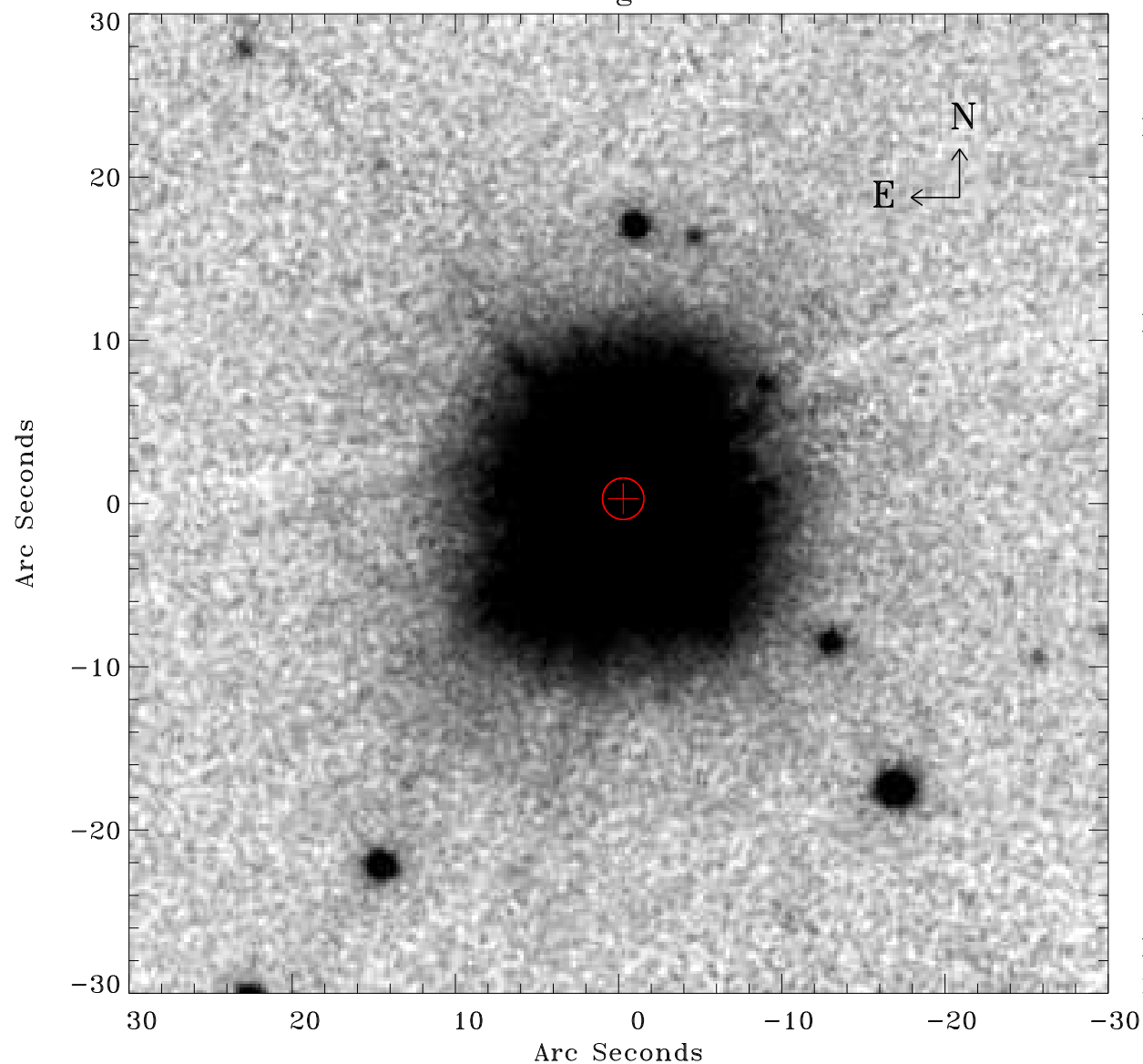


# EPIC source finding chart ACDS V10.0



Principal Investigator :

Dr Marco Ajello

XMM target name :

2FGL J0630.9-2406

OBS ID : 740820401

Source number : 2

X-ray coordinates :

$\alpha$  : 06 31 36.72

$\delta$  : -24 09 50.3

Center coordinates :

$\alpha$  : 06 31 36.73

$\delta$  : -24 09 50.3

Plate reference :

Origin : CDS HIPs Network

Plate : PanSTARRS DR1 z

Pixel : 0.20 "/pix

Error circle :

$R_{90}$  (") : 1.3

XMM SSC

May 3 17:28:28 2019