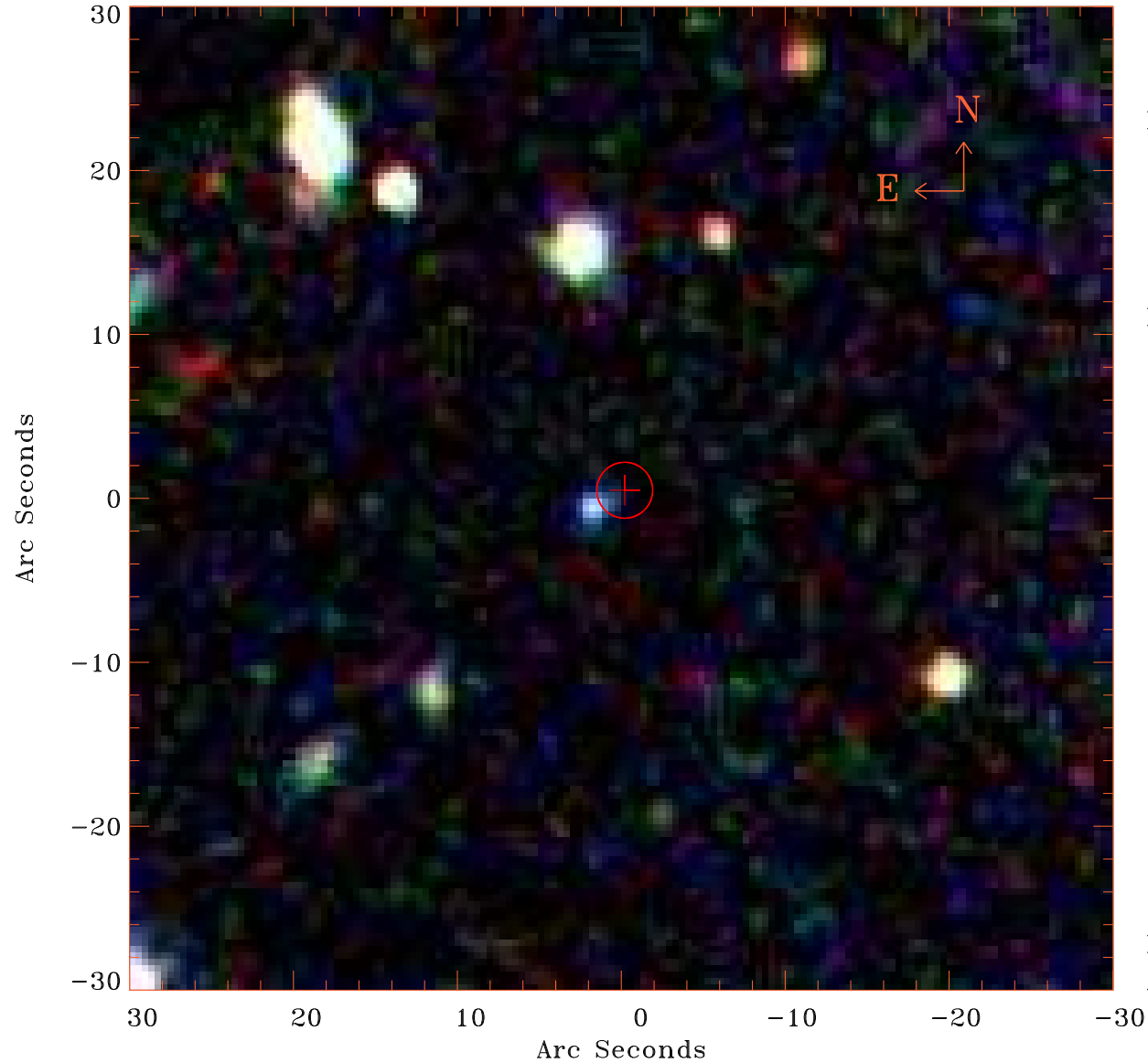


EPIC source finding chart V10.0



Principal Investigator :

Dr Lorenzo Lovisari

XMM target name :

NGC6338

OBS ID : 741580101

Source number : 26

X-ray coordinates :

α : 17 15 35.80

δ : +57 18 43.6

Center coordinates :

α : 17 15 35.78

δ : +57 18 43.5

Plate reference :

Origin : SDSS

Color coding :

i band ●

r band ●

g band ●

Error circle :

R_{90} (") : 1.7

XMM SSC

Apr 22 11:37:21 2019