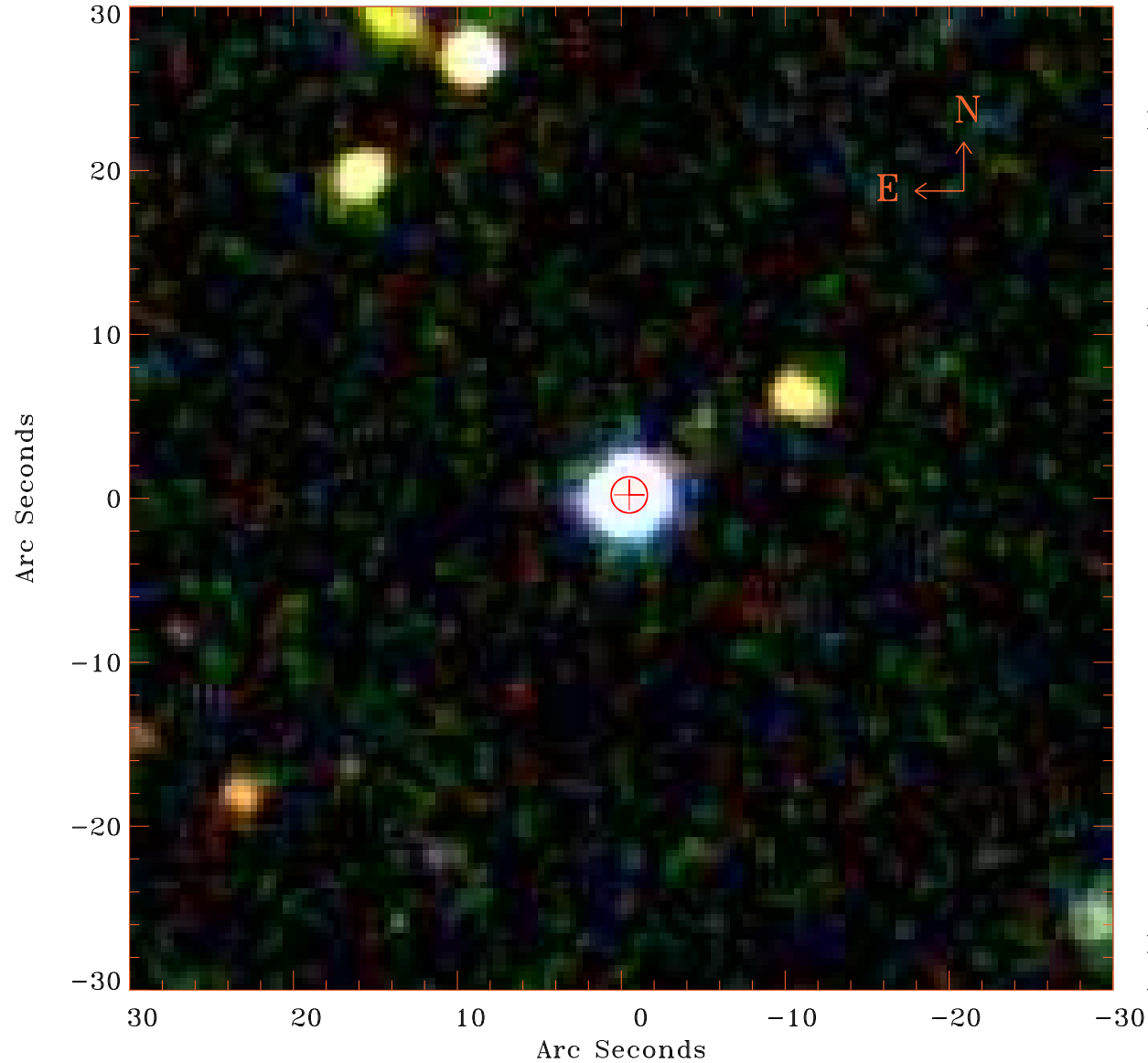


# EPIC source finding chart V10.0



Principal Investigator :

Dr Lorenzo Lovisari

XMM target name :

NGC6338

OBS ID : 741580101

Source number : 4

X-ray coordinates :

$\alpha$  : 17 15 22.25

$\delta$  : +57 36 26.5

Center coordinates :

$\alpha$  : 17 15 22.26

$\delta$  : +57 36 26.7

Plate reference :

Origin : SDSS

Color coding :

i band ●

r band ●

g band ●

Error circle :

$R_{90}$  (") : 1.1

XMM SSC

Apr 22 11:34:22 2019